

KENTUCKY DEPARTMENT OF HIGHWAYS

MCCRACKEN COUNTY

REIDLAND - MAYFIELD ROAD (KY. 131)

KY. 131 OVER EAST FORK CLARKS RIVER

GENERAL NOTE

SPECIFICATIONS: Kentucky Department of Highways, 1956 Standard with Amendments.
DESIGN LOAD: Bridge designed for H20-W loading as specified in 1961 AASHTO Specifications.

DESIGN STRESSES: For reinforced concrete:
 $f_c = 20,000$ psi
 $f_t = 3,000$ psi
 $f_s = 1,200$ psi
 For structural steel:
 $f_y = 18,000$ psi for A7 and A373
 $u = 200$ psi for embedment
 $u = 300$ psi for computations of sum of perimeters
 $n = 10$
 $t_s = 20,000$ psi for A36 steel

FOUNDATION PRESSURE: Piles are designed for a maximum load of 20 tons per pile. These maximums are for group loads with increases allowed for other loading groups.

CONCRETE: Class "A" Concrete to be used throughout.

REINFORCEMENT: Intermediate or higher grade reinforcement shall be used in accordance with ASTM A15-58T for ribbed steel or A16-59T for rail steel. Dimensions shown from face of concrete to bars or clear distances. Spacing of bars is from center to center of bars.

BEVELED EDGES: All exposed edges shall be beveled 7/8" unless otherwise shown.

JOINT MATERIAL, WATER STOP: The cost of these items is to be included in the unit price bid for Class "A" Concrete. See Std. Dwg. 6352.

STRUCTURAL STEEL: "Lump sum bid" for structural steel shall be full payment for all structural steel, rivets, bolts, washers, steel pins, cast iron, lead plates, molten lead, welding and welding materials, floor drains, paint, lines tracings of shop detail and erection drawings, and all labor and materials necessary to erect the steel in accordance with the plans and specifications.

PLACING FILLS: Embankment shall be placed in compacted layers to bottom of bents cap elevation before driving piles in any pile bent. Embankment shall be placed simultaneously in front and back of and bents in compacted layers and the 5 ft. minimum ben provided as shown on the plans.

PILING: Piling shall be driven to refusal or to sustain a minimum load of 50 tons per pile. Test piles shall be driven where designated on the plans to determine the length required. All test piles shall be accurately located so that they may be used in the finished structure.

SLOPE PROTECTION: Slope protection shall be Dry cyclopan Stone Riprap in accordance with Section 6.3.2.E of the Specifications.

PAINT: All structural steel except pins and pin bearing surfaces shall be given one shop coat of type I red lead paint and two field coats of aluminum paint. Exposed surfaces of expansion dams, not accessible after erection shall be given two field coats of aluminum paint before erection. Pins and pin bearing surfaces shall be coated in the shop with a hot mixture of white lead and tallow in accordance with the specifications. Shop paint shall not be applied within 3' of open holes where high strength bolts are to be used for field connections and shall not be applied to steel surfaces in contact with concrete.

SHEAR CONNECTORS: "Lump sum bid" for shear connectors shall be full payment for all shear connectors, welding and welding materials, patent royalties and materials necessary to field or shop weld the shear connectors in place in accordance with the plans and specifications.

OPTIONAL TYPES OF SHEAR CONNECTORS: The contractor shall use one of the following optional types throughout.
 Option 1 3/4" x 1 1/2" x 4" studs
 Option 2 3/4" x 1 1/2" x 4" studs
 Option 3 3/4" channel 45-99

TEMPORARY SUPPORTS: For composite beams temporary supports or shoring will not be permitted under the steel girders when pouring the concrete floor slab or when taking "top of steel" elevations.

WELDING STUDS: Studs used for composite shear developers or for attaching structural steel flooring to steel bridges shall be welded with approved welding equipment.

MATERIALS: A.S.T.M. Specifications herein after designated shall govern the materials furnished.

Structural steel (Blagh., Dowls, Brng. Pils.) A7-GT
 Structural steel (Exp. dam, shoes) A37-58T
 Structural steel (Beams, stiffeners) A36-GT
 Molten lead 625-55
 High Strength bolts, nuts & washers A325-GT
 Steel Shear Connectors A108 C1015

CONNECTIONS: Unless otherwise provided shop and field connections shall be 7/8" diameter rivets or high strength bolts. Open holes shall be 1 1/2" diameter.

HILL TEST REPORTS: Motorized test reports in triplicate shall be furnished the Kentucky Department of Highways showing that all materials furnished conform to the specifications.

STEEL FINISH: Steel bearing surfaces in contact shall be finished in accordance with section 5.2.3. of the specifications.

PROTECTIVE COATING: The item for protective coating shall be according to "the special Provision for Linseed Oil Protective Coating."

HANDRAIL: Alternate types of metal handrail; the contractor shall use one of the following throughout:
 Alternate "A" Aluminum Handrail Std. Dwg. H12
 Alternate "B" Galvanized Steel Handrail Std. Dwg. H10

SHOP ASSEMBLY AND REAMING: General reaming of holes for field splices shall be required with all parts for each splice completely shop assembled with parts adjusted to lines and corner fit, for drilling or reaming. This applies for field splices in beams only. Beams shall be assembled for inspection by the Department of Highways Inspector and are to be match marked while assembled.

DIMENSIONS: Dimensions are for a normal temperature of 60 degrees Fahrenheit.

SHOP PLANS: The contractor shall submit shop detail plans.

CHANGES IN STRUCTURAL STEEL QUANTITIES: In the event that changes in steel quantities are required due to changes by the Engineer in the plans, additional payments therefor shall be made at a unit price which will be equal to the contract lump sum price divided by the estimated total weight.

RIVET STRENGTH BOLTS: Connections using high strength steel bolts shall be in accordance with Section 5.2.3.4-5(1) of the Specifications. Assembly and dimensions of high strength steel bolts, nuts and washers shall conform to "Specifications for Structural Bolts using ASTM A255 Bolts", March 1960, approved by the Research Council on Riveted and Bolted Structural Joints" of the Engineering Foundation. All joints are designed as friction-type connections. Installation shall be performed by the turn-of-nut method.

ADDITIONAL FIELD SPLICES: If additional field splices are permitted they shall be at the Contractor's expense and shall be included in the "Lump sum bid" for structural steel.

WIND LOADS: This structure is designed using wind loads based on a wind velocity of 86 mph.

WELDING SPECIFICATIONS: All welding materials, welding technique, and welding procedure shall comply with American Welding Society Standard Specifications for Welding Highway and Railway Bridges: 1963 edition.

FLOOR DRAINS: The cost of this item is to be included in the "Lump Sum Bid" for structural steel.

DRIVING CONCRETE PILES: Cored pilot-holes through the embankment will be required for starting piles. The cost of this work is to be included in the unit price bid per linear foot for driving piles.

REMOVING EXISTING STRUCTURE: After the new bridge is opened to traffic the old bridge and approaches are to be removed. Match marking is not required. Steel stringers and floor beams are to be removed without damage and the remainder of the structure may be removed in any manner desired, cut into lengths for easy handling and all steel stored in a location convenient for loading as directed by the Resident Engineer. Bridge approaches are to be removed in accordance with road plans. The cost of all labor and materials required for removal of the structure and the approach fills, all in accordance with Art. 6.11.2 of Specifications, shall be included in a Lump Sum Bid.

REFERENCES AND ESTIMATE OF QUANTITIES

ITEM	SHEET NO.	CONCRETE CLASS "A" CU. YDS.	REINFORCEMENT LBS.	METAL HANDRAIL LBS. FT.		STEEL STRUCTURE LBS.	SLOPE PROTECTION CYCLES	SHEAR CONNECTORS LBS.	PILES 14" RC PILES LBS. FT.	EXCAVATION CU. YDS.	LIMESEED OIL PROTECTIVE COATING SQ. YDS.	
				ALUM.	STEEL							
TITLE SHEET	1											
LAYOUT	2											
END. BENT 1	3 & 4	41.7	4398				915		525	525		
PIER 1	5	83.2	10781						970	970	90	
PIER 2	6	128.6	16279						1283	1283	125	
PIER 3	7	118.7	15740						1108	1108	105	
END. BENT 2	8 & 9	41.7	4398				915		970	970	90	
FRAMING PLAN	10								525	525		
ROWY SLAB SPAN 1, 2, 3, 4, 5	11	383.6	47099								1665	
DIAPHRAGMS & SPLICES	11											
STRIBES	11											
EXPANSION DAM	10											
SHOES	11											
SOORDINGS	13											
CONSTRUCTION ELEVATIONS	18											
PILE RECORD	18											
HANDRAIL POST SPACING	12											
PILES	12											
HANDRAIL H12-H13	---											
SHEAR CONNECTORS	11											
SLOPE PROTECTION	2											
FLOOR DRAINS	10, 12											
TOTALS		870.5	132,006						5291	5291	910	1665

*APPROXIMATE WEIGHT OF STRUCTURAL STEEL 402,946 LBS.

**APPROXIMATE WEIGHT OF STUD SHEAR CONNECTORS 4,068 LBS.

REFERENCES
 Special provisions for protective coating
 Special provisions for joint sealing compound.
 H12 or H13
 082
 P2
 10.03

BILL OF INCIDENTAL MATERIAL		
ITEM	NO.	SIZE
Prem. Cork Exp. Jt. Mat'l	2	10" x 24" x 0"
Polystyrene Waterstop	2	32" x 0"

The bill of incidental material is approximate only and the contractor is responsible for furnishing enough material to complete the work in accordance with the plans and specifications.

KY. 131 OVER EAST FORK CLARKS RIVER SHEET 1 OF 19

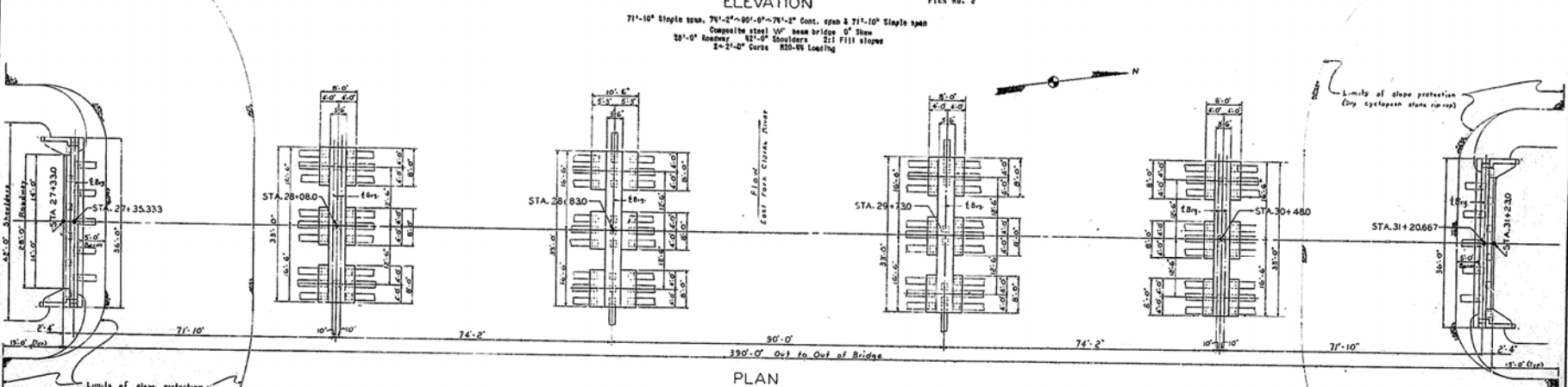
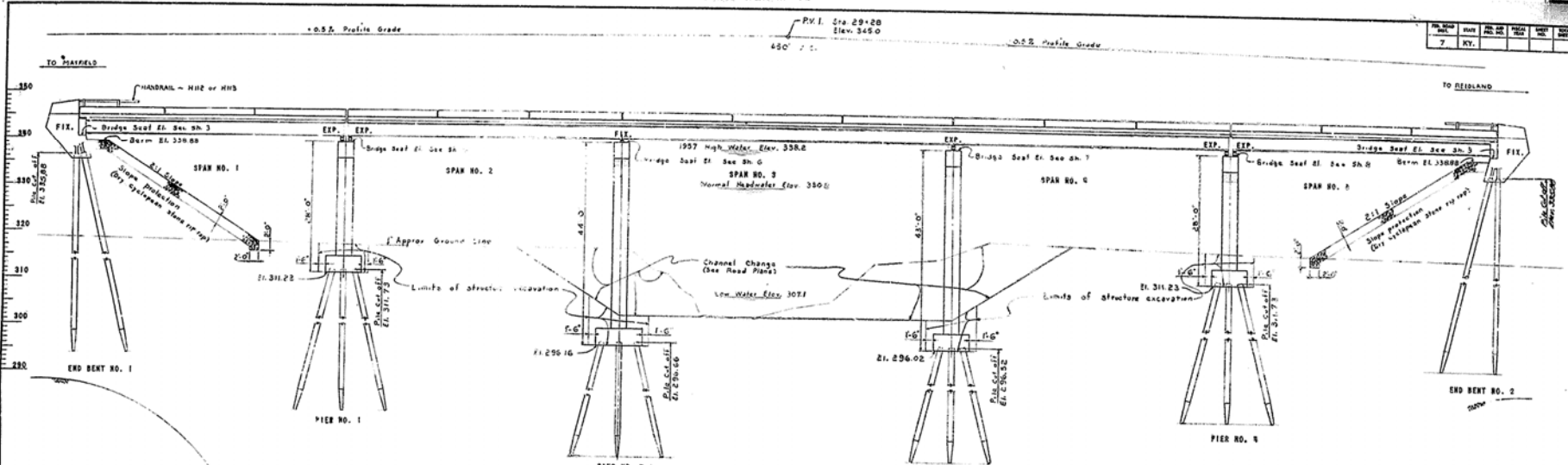
COMMONWEALTH OF KENTUCKY
 DEPARTMENT OF HIGHWAYS
 FRANKFORT
 COUNTY OF
MCCRACKEN
 REIDLAND - MAYFIELD (KY. 131)
 ROAD

STATION 28 + 25.0 PROJECT NO. 17-71-92-21

BRIDGE NUMBER	DATE	SCALE
	1969	

Checked by: [Signature]
 Drawn by: [Signature]
 Design by: [Signature]
 Date: [Date]

NO.	DATE	BY	CHKD.	APP.	REVISION
7	KY.				



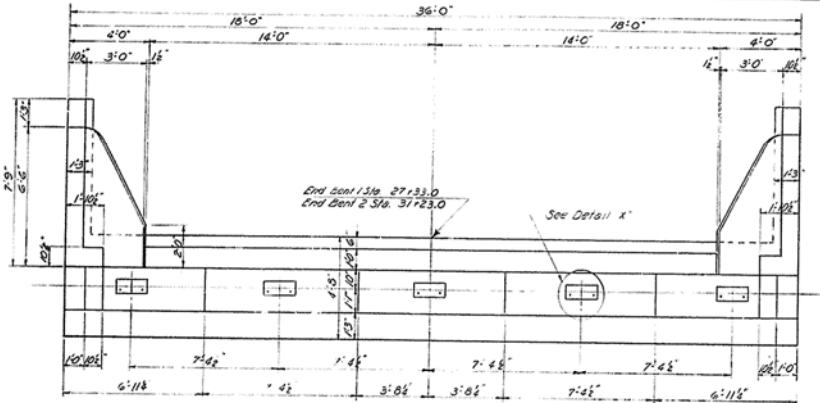
LAYOUT

KY 101 OVER EAST FORK CLARK RIVER SHEET 2

COMMONWEALTH OF KENTUCKY
DEPARTMENT OF HIGHWAYS
FRANKFORT
COUNTY OF
MCCRACKEN
REIDLAND - MAYFIELD (KY 131)
ROAD

STATION 29+280 PROJECT NO.
BRIDGE NUMBER 15634

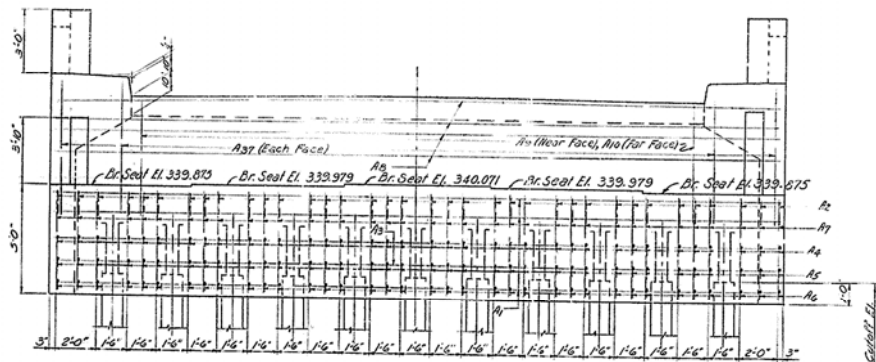
NO.	DATE	BY	CHK.	APP.	DATE
7	KY.				



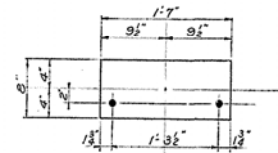
PLAN OF CAP

ESTIMATE OF QUANTITIES

End Bent No. 1	End Bent No. 2
Concrete Class "A" 41.7 Cu.Yds.	Concrete Class "A" 41.7 Cu.Yds.
Reinforcement 4398 lbs.	Reinforcement 4398 lbs.

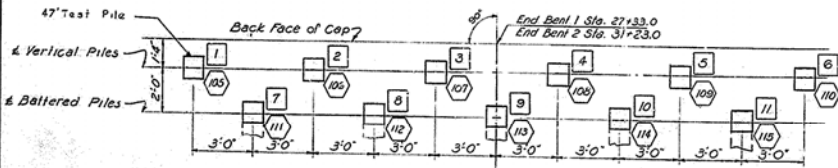


ELEVATION



DETAIL 'X'

NOTE:
For pile record see Sheet 9.



PLAN OF PILING

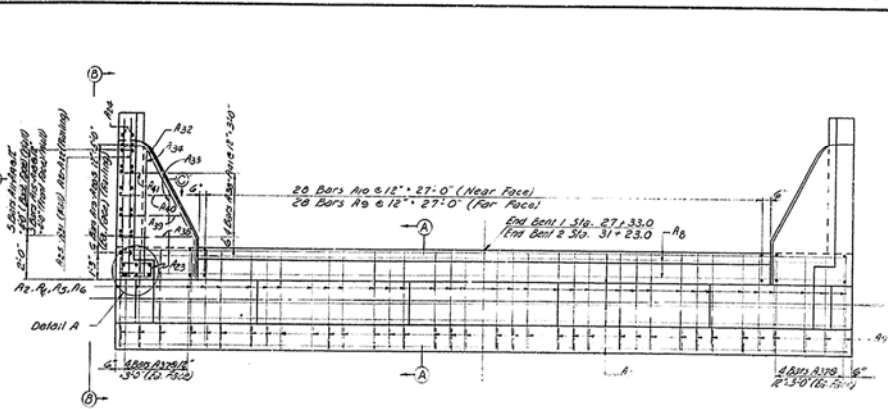
□ End Bent 1 Piling.
◡ End Bent 2 Piling.

END BENTS 1 & 2

11.131 over East Park Clarke River Sheet 3

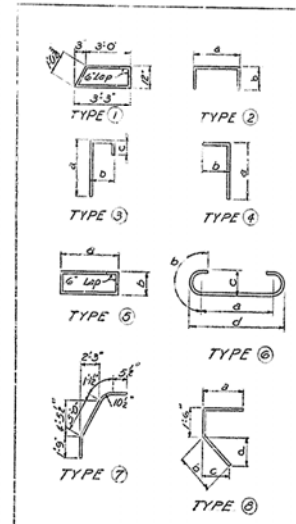
COMMONWEALTH OF KENTUCKY
DEPARTMENT OF HIGHWAYS
FRANKFORT
COUNTY OF
McCRACKEN
REIDLAND-MAYFIELD (KY. 131)
ROAD

STATION 29+28.0	PROJECT NO.
BRIDGE NUMBER	ISSUED 15634

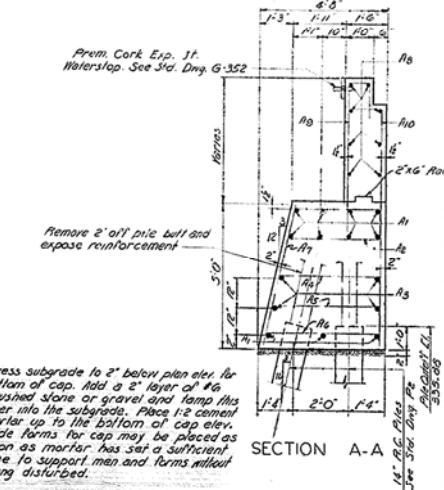


PLAN

To Mayfield & E. To Reventon & B.



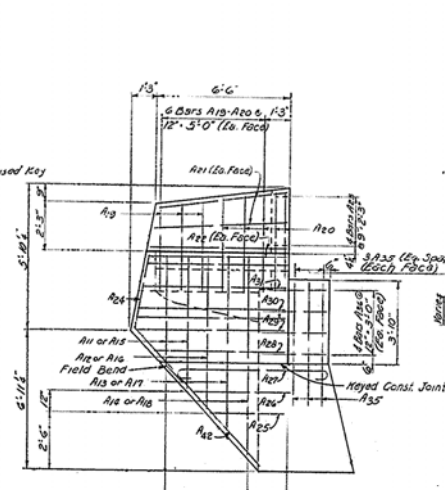
BILL & TYPES OF REINFORCEMENT										
BAR TYPE	NO.	LENGTH FE. IN.	LOCATION				FE. IN.	FE. IN.	FE. IN.	FE. IN.
			a	b	c	d				
A1	Stk. 11	9.35	9	Cap						
A2	(7) 36	9.0								
A3	Stk. 4	35.9								
A4	(2) 36	3.17	3	7	0	3				
A5	36	4.2	3	10	0	3				
A6	36	4.5	4	1	0	3				
A7	Stk. 36	4.9								
A8	8	35.9	Backwall							
A9	(3) 20	7.4	5	3	0	9	1	6		
A10	(4) 20	7.7	4	5	1	3				
A11	Stk. 4	25.5	Wing Walls							
A12	2	6.3								
A13	2	7.10								
A14	2	9.0								
A15	2	4.3								
A16	2	5.3								
A17	2	6.3								
A18	2	7.3								
A19	12	4.7	Handrail							
A20	24	5.1								
A21	8	6.4								
A22	8	6.4								
A23	(3) 8	14.5	1	7	0	7				
A24	Stk. 4	25.9	Wing Wall							
A25	4	3.9								
A26	4	4.9								
A27	(6) 8	18.2	6	2	1	6	0	10	7	0
A28	Stk. 4	25.0								
A29	4	7.3								
A30	4	7.0								
A31	2	6.9								
A32	(2) 6	8.4	Curb							
A33	Stk. 2	3.9								
A34	2	5.10								
A35	12	5.0	Wall on Bridge Seat							
A36	16	3.3								
A37	16	6.1	Backwall							
A38	(2) 2	7.10	3	6	3	11	3	6	1	9
A39	2	7.10	8	0	3	4	3	0	1	6
A40	2	6.5	2	4	2	7	4	1	2	
A41	2	5.4	1	10	2	0	1	10	0	11
A42	Stk. 4	8.10	Wall							



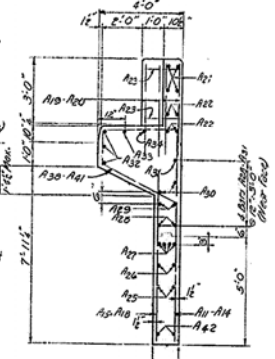
SECTION A-A

Dress subgrade to 2" below plan elev. for bottom of cap. Add a 2" layer of #6 crushed stone or gravel and tamp this layer into the subgrade. Place 1/2" cement mortar up to the bottom of cap elev. Side forms for cap may be placed as soon as mortar has set a sufficient time to support men and forms without being disturbed.

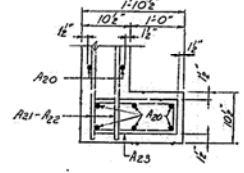
This method is to be used instead of bottom-of-cap forms and the cost of materials and work shall be incidental to and shall be included in the unit price bid for Class "B" concrete.



ELEVATION B-B



SECTION C-C



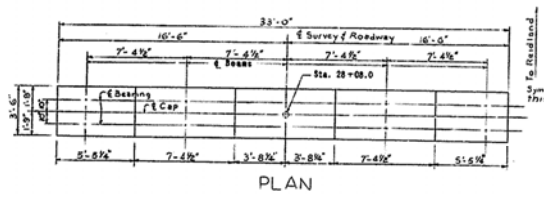
DETAIL 'A'

END BENTS 1 & 2

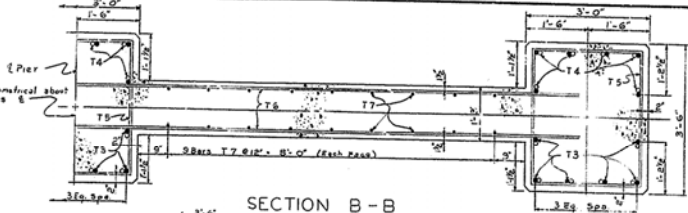
Sheet 4

K131 Over East Fork Clarke River

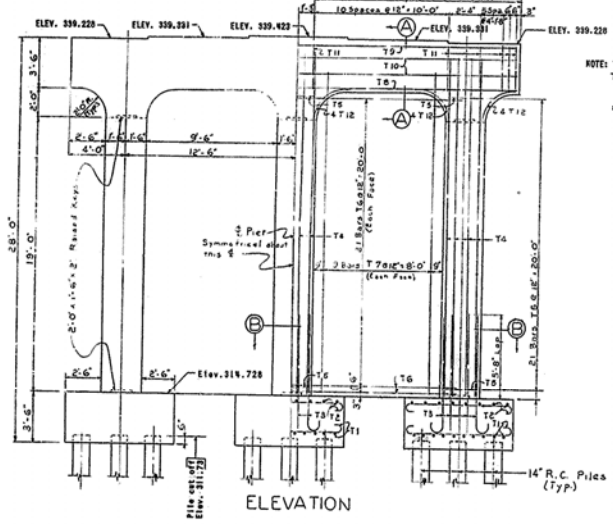
COMMONWEALTH OF KENTUCKY
DEPARTMENT OF HIGHWAYS
FRANKFORT
COUNTY OF
McCRACKEN
REIDLAND-MAYFIELD (KY 131)
ROAD
STATION 291.26.0 PROJECT NO. 15634



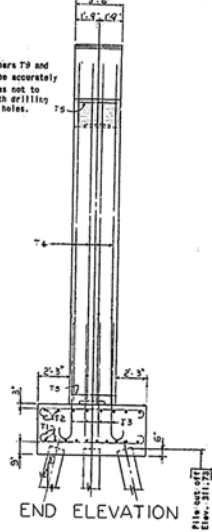
PLAN



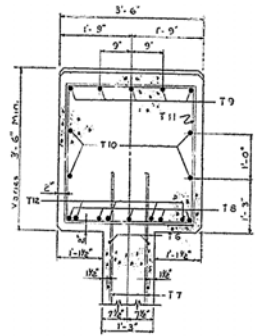
SECTION B-B



ELEVATION



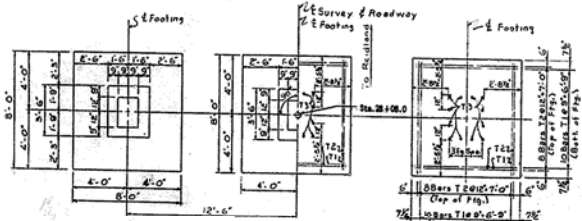
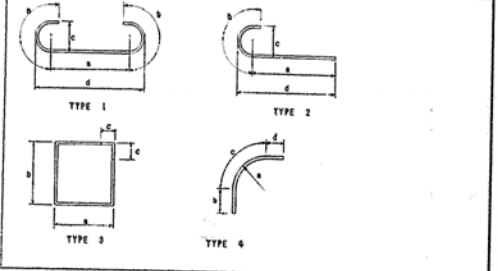
END ELEVATION



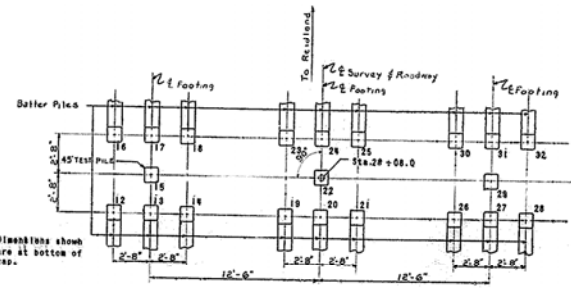
SECTION A-A

BILL OF REINFORCEMENT

Mark	Type	No.	Size	Length FT. IN.	Location	Quantity				
						a	b	c	d	
FT.	IN.	FT.	IN.	FT.	IN.	FT.	IN.	FT.	IN.	
T1	1	40	#7	9	6	Footings				
T2	1	48	#5	0	0	Footings				
T3	2	36	#10	0	6	Column covers				
T4	str	36	#10	23	8	Column				
T5	3	63	#4	12	6	Column hoops				
T6	str	42	#5	24	8	Web				
T7	str	36	#5	22	6	Web				
T8	str	5	#8	32	8	Cap				
T9	1	5	#8	34	10	Cap				
T10	str	1	#5	32	8	Cap	31	10	1	6
T11	3	38	#4	13	5	Cap stirrups				
T12	4	25	#4	5	6	Reinuch	2	2	1	8



PLAN OF FOOTING



PLAN OF PILING

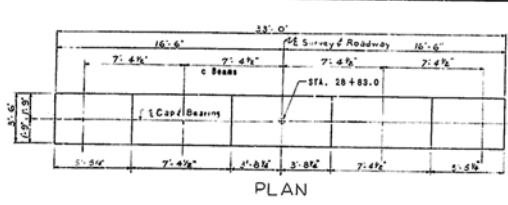
ESTIMATE OF QUANTITIES
 CONCRETE CLASS "A" 52.2 CU. YDS.
 REINFORCEMENT 10,781 LBS.

ST. 131 OVER EAST FORK CLARKS RIVER SHEET 6

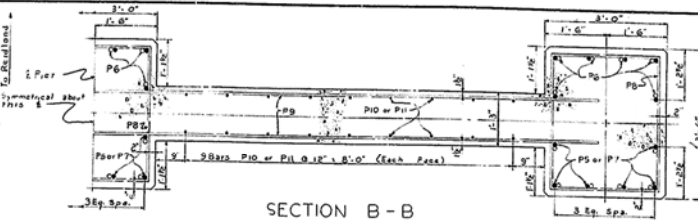
COMMONWEALTH OF KENTUCKY
 DEPARTMENT OF HIGHWAYS
 FRANKFORT
 COUNTY OF
McCRACKEN
 REIDLAND - MAYFIELD (KY 131)
 ROAD

STATION 29+28.0 PROJECT NO.
 BRIDGE NUMBER 15634

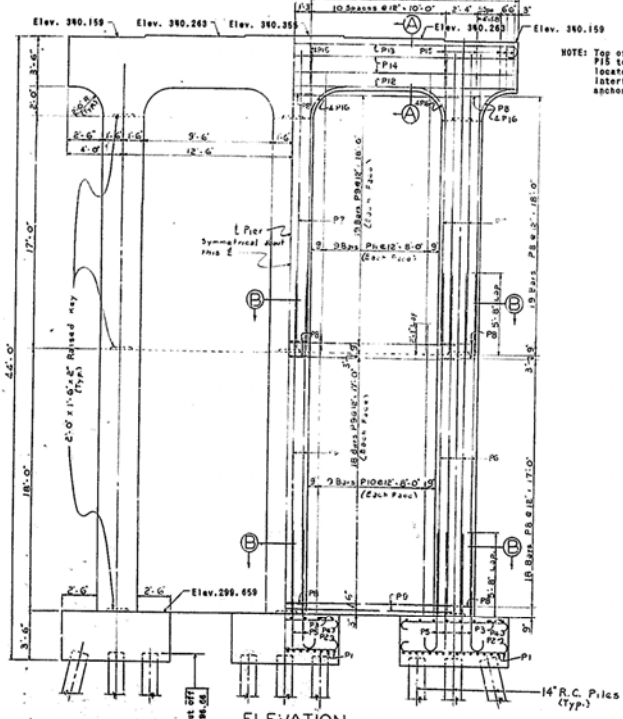
PIER 1



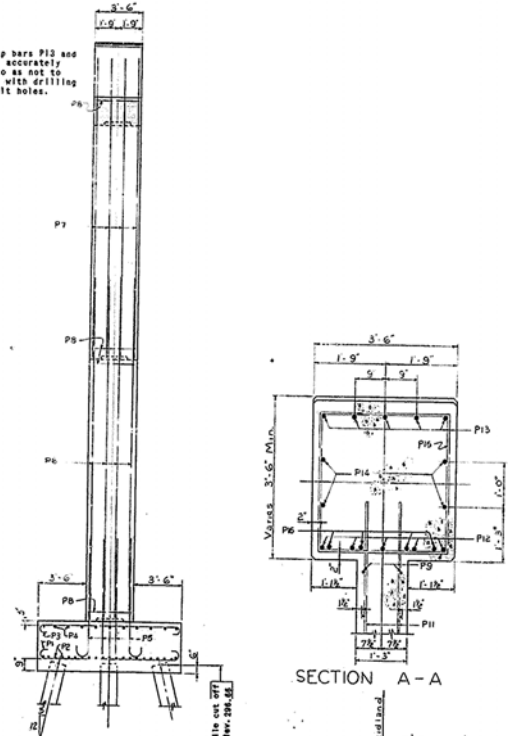
PLAN



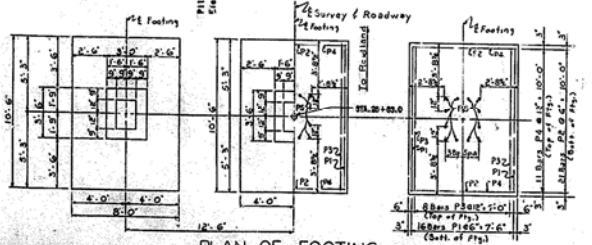
SECTION B-B



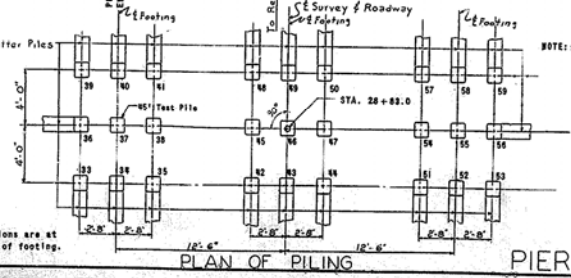
ELEVATION



SECTION A-A



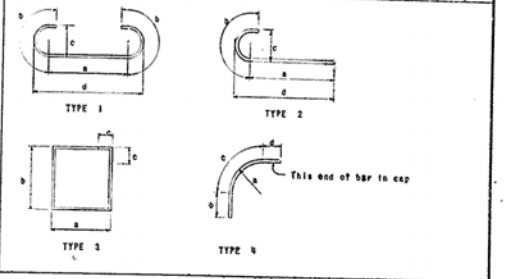
PLAN OF FOOTING



PLAN OF PILING

PIER 2

BILL OF REINFORCEMENT														
Mark	Type	No.	Size	Length	Location	FT.				IN.				
				FT. IN.		a	b	c	d	e	f			
P 1	1	48	#8	12	5	Footing	8	5	1	6	0	10	10	3
P 2	1	60	#8	9	11	Footing	6	11	1	6	0	10	7	3
P 3	1	24	#5	11	6	Footing	9	10	0	10	0	8	10	3
P 4	1	35	#5	9	0	Footing	7	6	0	10	0	8	10	3
P 5	2	36	#10	9	6	Column dowels	7	8	1	10	1	0	8	2
P 6	6	str	36	#10	23	8	Column							
P 7	6	str	36	#10	21	8	Column							
P 8	3	111	#8	12	5	Column hoops	2	8	2	2	6	6		
P 9	6	str	74	#5	24	8	Web							
P 10	6	str	36	#5	20	1	Web							
P 11	6	str	36	#5	20	1	Web							
P 12	6	str	5	#9	32	8	Cap							
P 13	1	5	#8	25	10	Cap	31	10	1	6	0	10	32	8
P 14	6	str	4	#5	32	8	Cap							
P 15	3	38	#4	13	5	Cap hoops	3	2	2	0	6			
P 16	4	24	#6	5	6	HAUNCH	2	3	1	3	6	0	8	



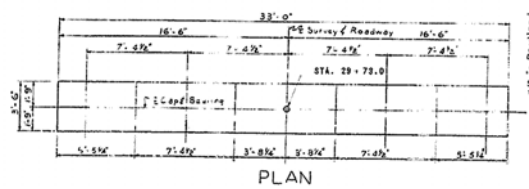
ESTIMATE OF QUANTITIES
 CONCRETE CLASS "A"
 REINFORCEMENT
 123.4 CU. YDS.
 18,279 LB.

BRIDGE OVER EAST FORK CLARKS RIVER SHEET 5

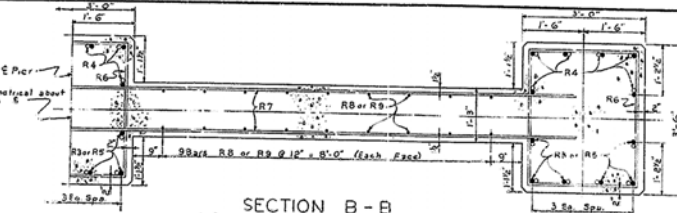
COMMONWEALTH OF KENTUCKY
 DEPARTMENT OF HIGHWAYS
 FRANKFORT
 COUNTY OF
MCCracken
 REIDLAND - MAYFIELD, (KY 131)
 ROAD

STATION 28+28.0 PROJECT NO. 15634

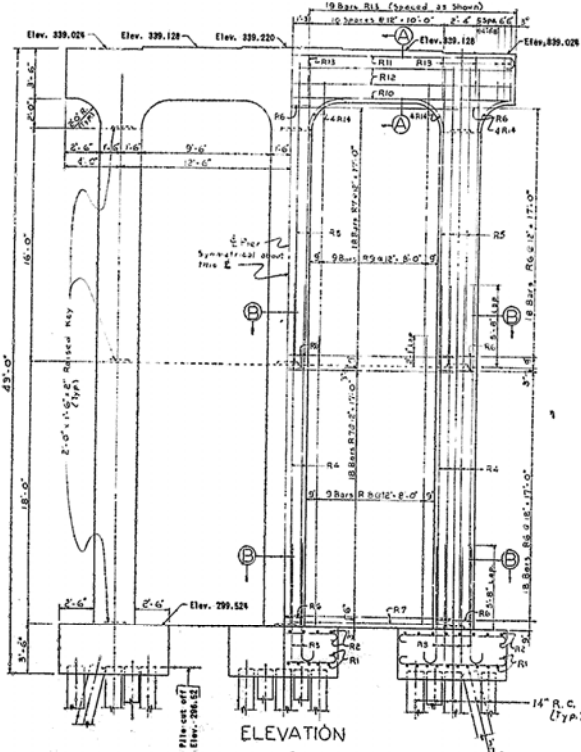
DATE: _____
 DRAWN BY: _____
 CHECKED BY: _____
 APPROVED BY: _____



PLAN

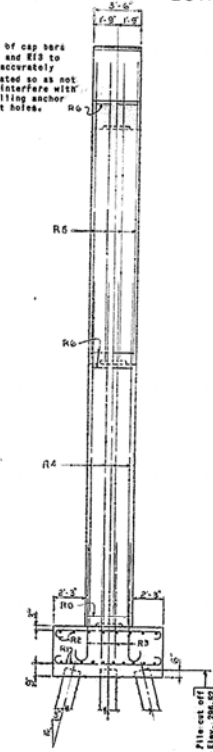


SECTION B-B

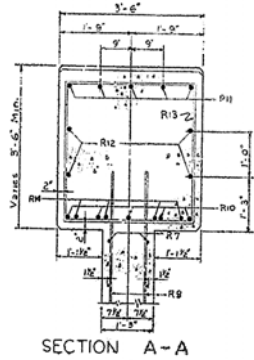


ELEVATION

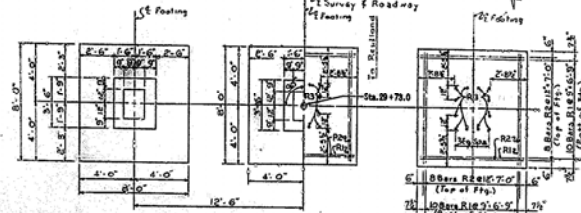
NOTE: Top of cap bars R11 and R13 to be accurately located so as not to interfere with drilling anchor bolt holes.



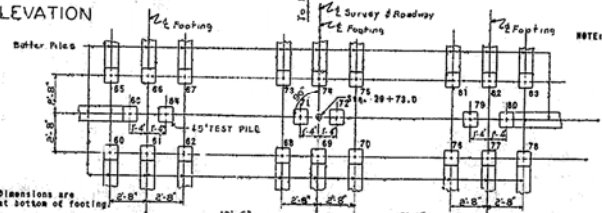
END ELEVATION



SECTION A-A



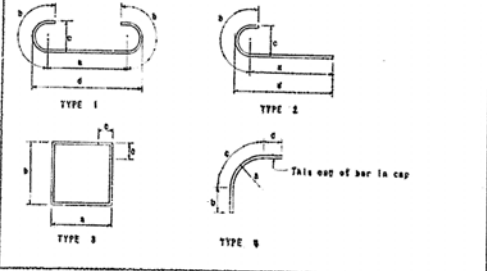
PLAN OF FOOTING



PLAN OF PILING

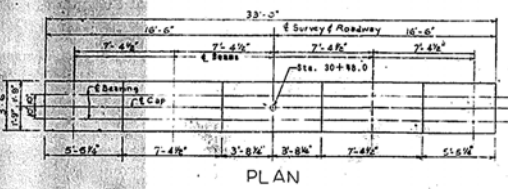
NOTE: Dimensions are at bottom of footing

BILL OF REINFORCEMENT									
Mark	Type	Sp.	Size	Length	Location	a	b	c	d
				FT. IN.		FT. IN.	FT. IN.	FT. IN.	FT. IN.
R 1	1	60	27	9 6	Footing	7	2	1	2
R 2	1	48	35	5 0	Footing	7	0	10	0
R 3	2	36	310	9 6	Column downls	7	0	1	10
R 4	atr	36	310	23 8	Column				
R 5	atr	36	310	20 8	Column				
R 6	3	108	34	12 5	Column hoops	2	0	3	2
R 7	atr	72	35	24 8	Web				
R 8	atr	24	35	20 1	Web				
R 9	atr	36	35	19 4	Web				
R 10	atr	5	39	32 8	Cap				
R 11	1	5	39	34 10	Cap	3	10	1	6
R 12	atr	4	35	32 8	Cap				
R 13	3	36	34	13 5	Cap stirrups	3	2	3	2
R 14	4	24	34	5 6	Haunch	2	3	1	8

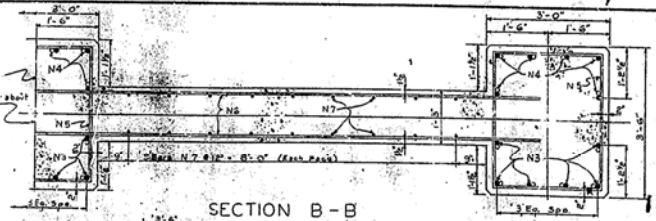


ESTIMATE OF QUANTITIES
 CONCRETE CLASS "A" 115.7 CU. YDS.
 REINFORCEMENT 15,760 LBS.

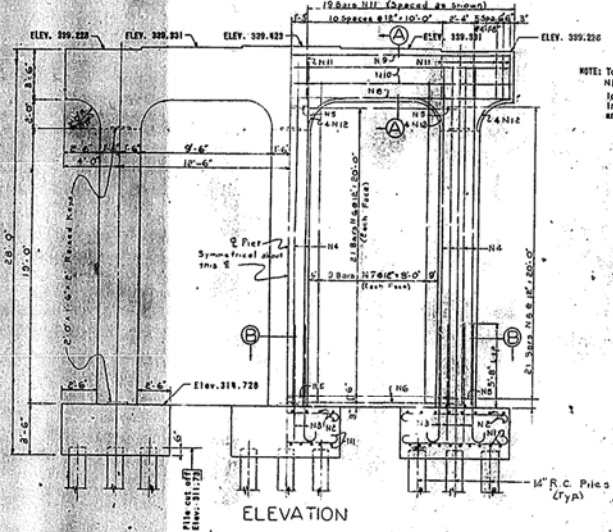
KY. 131 OVER EAST FORK CLARKS RIVER SHEET 7
COMMONWEALTH OF KENTUCKY
 DEPARTMENT OF HIGHWAYS
 FRANKFORT
 COUNTY OF
MCCRACKEN
 REIDLAND - MAYFIELD (KY 131)
 ROAD
 STATION 29+28.0 PROJECT NO.
 BRIDGE NUMBER 15634



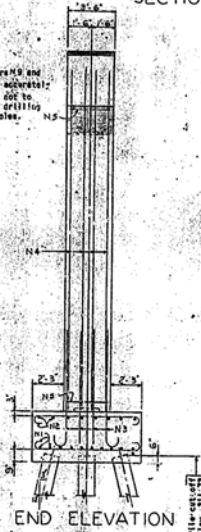
PLAN



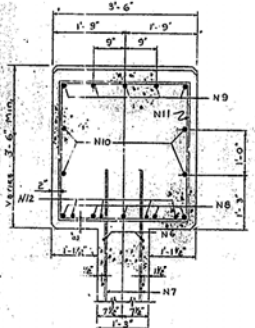
SECTION B-B



ELEVATION



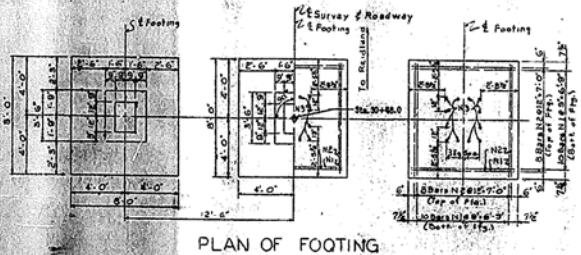
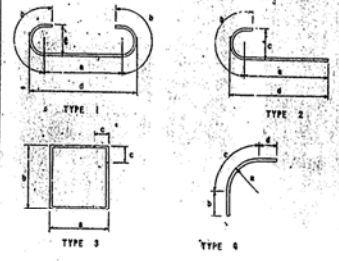
END ELEVATION



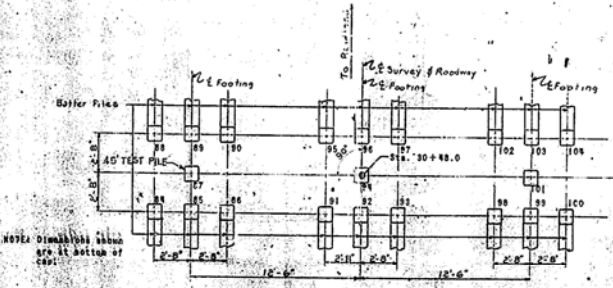
SECTION A-A

BILL OF REINFORCEMENT

Mark	Type	No.	Size	Length	Location	FT.	IN.	FT.	IN.	FT.	IN.	FT.	IN.	FT.	IN.
R1	1	40	#7	9	Footing	7	2	1	0	0	0	0	0	0	0
R2	1	40	#7	9	Footing	7	2	1	0	0	0	0	0	0	0
R3	2	34	#10	5	Column dowels	7	2	1	0	0	0	0	0	0	0
R4	Str.	34	#10	23	Column	7	2	1	0	0	0	0	0	0	0
R5	3	63	#10	12	Column - caps	2	3	3	2	0	0	0	0	0	0
R6	str.	42	#6	24	Web	7	2	1	0	0	0	0	0	0	0
R7	str.	34	#6	22	Web	7	2	1	0	0	0	0	0	0	0
R8	str.	6	#6	24	Cap	7	2	1	0	0	0	0	0	0	0
R9	str.	6	#6	24	Cap	7	2	1	0	0	0	0	0	0	0
R10	str.	6	#6	24	Cap	7	2	1	0	0	0	0	0	0	0
R11	3	24	#6	18	Cap stirraps	3	2	3	2	0	0	0	0	0	0
R12	6	24	#6	5	Reinced	2	3	1	0	0	0	0	0	0	0



PLAN OF FOOTING



PLAN OF PILING

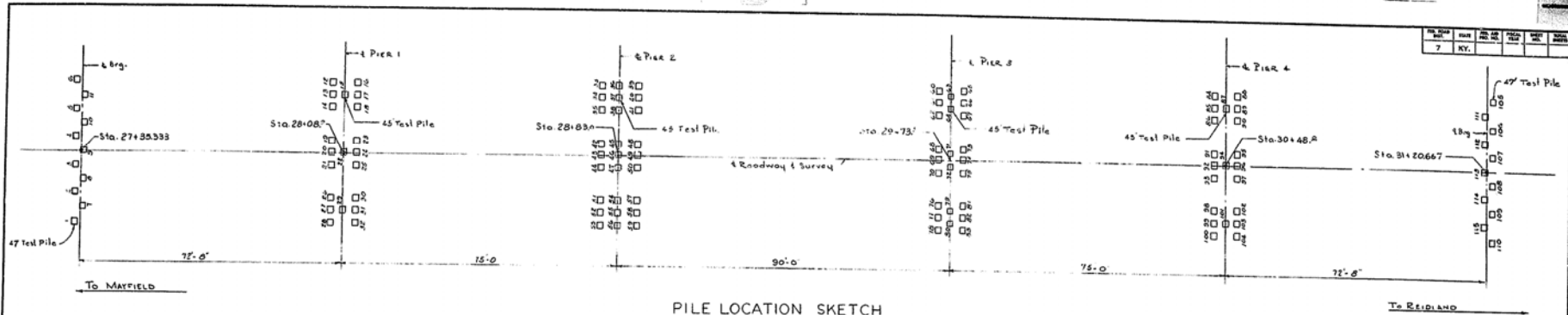
ESTIMATE OF QUANTITIES

CONCRETE CLASS "A"	23.2 CU. YDS.
REINFORCEMENT	10,781 LBS.

ST. 191 OVER EAST FORK CLARKS RIVER

COMMONWEALTH OF KENTUCKY
DEPARTMENT OF HIGHWAYS
FRANKFORT
COUNTY OF
MCCracken
REIDLAND - MAYFIELD - KY 131
ROAD
STATION 29+28.0 PROJECT NO. 10-781

PIER 4



PILE LOCATION SKETCH

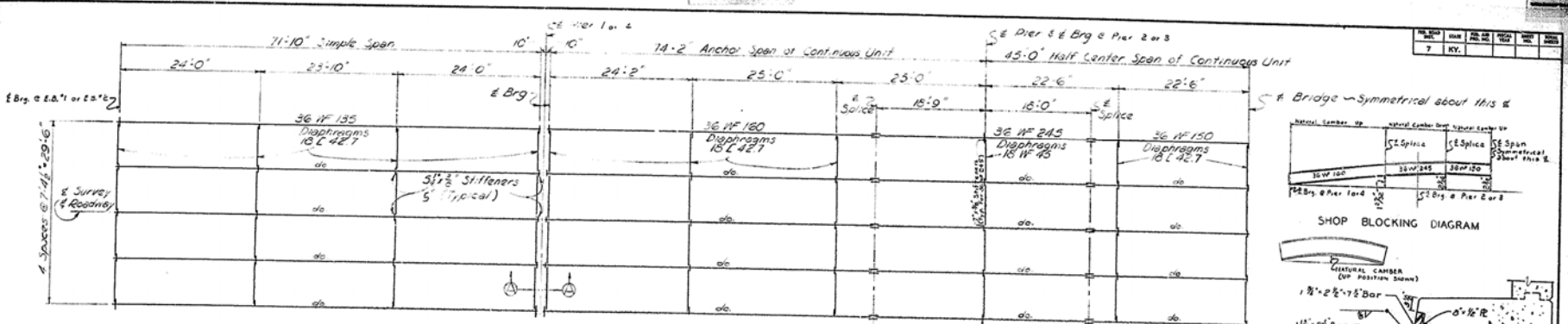
NOTE: See Details for dimensions and location of batter and straight piles.

PILE NO.	CUTOFF EL. AS SHOWN ON PLANS	TIP OF PILE ELEVATION AS DRIVEN	PILE LENGTH IN PLACE LIN. FT.	CALCULATED BEARING CAPACITY	PILE NO.	CUTOFF EL. AS SHOWN ON PLANS	TIP OF PILE ELEVATION AS DRIVEN	PILE LENGTH IN PLACE LIN. FT.	CALCULATED BEARING CAPACITY	PILE NO.	CUTOFF EL. AS SHOWN ON PLANS	TIP OF PILE ELEVATION AS DRIVEN	PILE LENGTH IN PLACE LIN. FT.	CALCULATED BEARING CAPACITY
1	335.88				44	296.66				87	311.73			
2	"				45	"				88	"			
3	"				46	"				89	"			
4	"				47	"				90	"			
5	"				48	"				91	"			
6	"				49	"				92	"			
7	"				50	"				93	"			
8	"				51	"				94	"			
9	"				52	"				95	"			
10	"				53	"				96	"			
11	"				54	"				97	"			
12	311.73				55	"				98	"			
13	"				56	"				99	"			
14	"				57	"				100	"			
15	"				58	"				101	"			
16	"				59	"				102	"			
17	"				60	236.62				103	"			
18	"				61	"				104	"			
19	"				62	"				105	325.68			
20	"				63	"				106	"			
21	"				64	"				107	"			
22	"				65	"				108	"			
23	"				66	"				109	"			
24	"				67	"				110	"			
25	"				68	"				111	"			
26	"				69	"				112	"			
27	"				70	"				113	"			
28	"				71	"				114	"			
29	"				72	"				115	"			
30	"				73	"								
31	"				74	"								
32	"				75	"								
33	296.66				76	"								
34	"				77	"								
35	"				78	"								
36	"				79	"								
37	"				80	"								
38	"				81	"								
39	"				82	"								
40	"				83	"								
41	"				84	311.73								
42	"				85	"								
43	"				86	"								

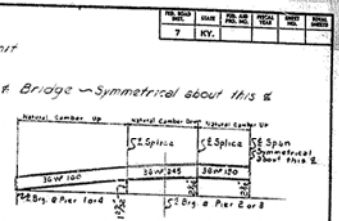
PILE RECORD: This pile record does not replace other records of piles required to be kept and submitted by the Resident Engineer. After all piles have been driven the Resident Engineer shall record the tip-of-pile elevation as driven, the length of pile in place, the calculated bearing capacity of each pile, and shall return one blue print copy of this sheet with this data to the Director of Bridges so that the data may be recorded on the original plans. Lengths of piles in place shown hereon are the actual lengths of piles in the finished structure below cut-off elevation and are not necessarily pay items.

KY 131 OVER EAST FORK CLARK'S RIVER SHEET 9
COMMONWEALTH OF KENTUCKY
 DEPARTMENT OF HIGHWAYS
 FRANKFORT
 COUNTY OF
McCRACKEN
 REIDLAND - MAYFIELD (KY 131)
 ROAD
 STATION 29 + 28 PROJECT NO. SP 73-92-2L
 BRIDGE NUMBER 15631 DRAWING NO. 15631

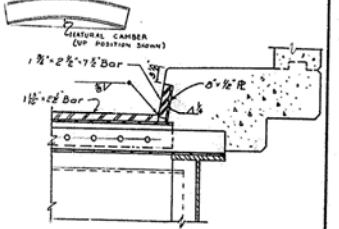
PILE RECORD



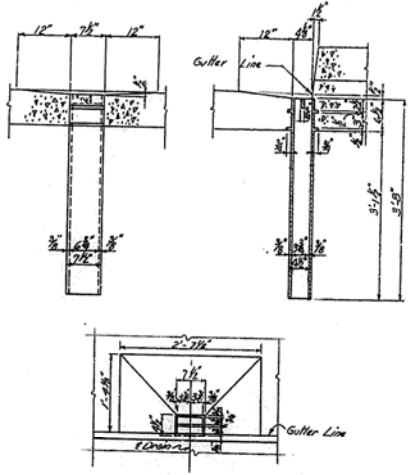
HALF FRAMING PLAN



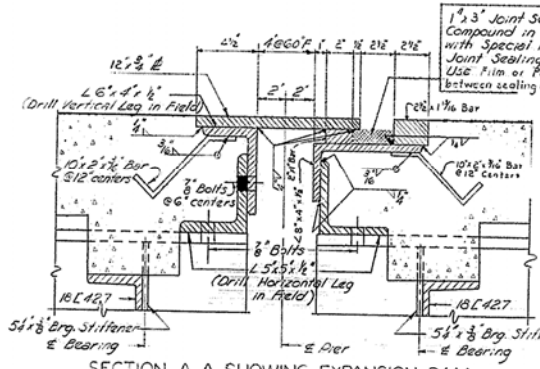
SHOP BLOCKING DIAGRAM



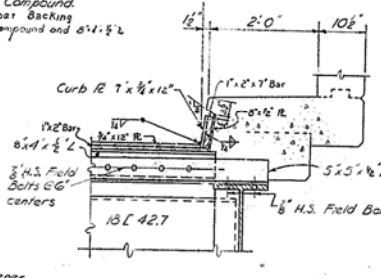
SECTION C-C



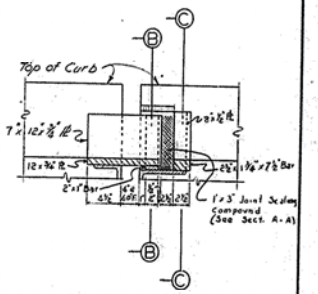
DETAILS OF CAST IRON FLOOR DRAINS
 WEIGHT EACH 105 LBS.
 (5/8 added for fillets)
 28 REQUIRED
 FOR LOCATION OF DRAINS SEE SHEET 12



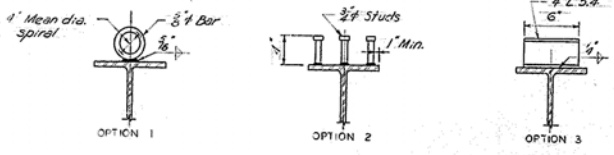
SECTION A-A SHOWING EXPANSION DAM



SECTION B-B



PART ELEVATION
 SHOWING CURB PLATE AT EXP. DAM



NOTE:
 The contractor may use any one of the three types of shear connectors shown. The option selected shall be used throughout the job. Spacing for options 2 & 3 are shown on sheet 11. If option 1 is used the pitch shown on the shop details must have an ultimate capacity equal to options 2 & 3.

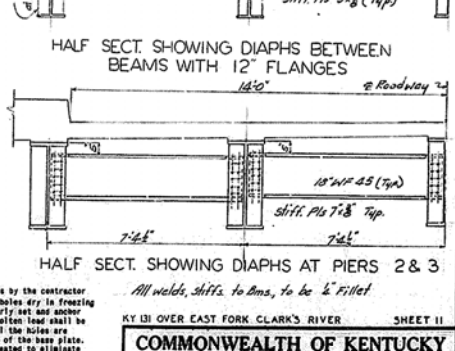
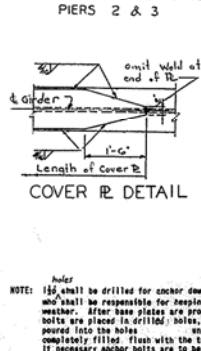
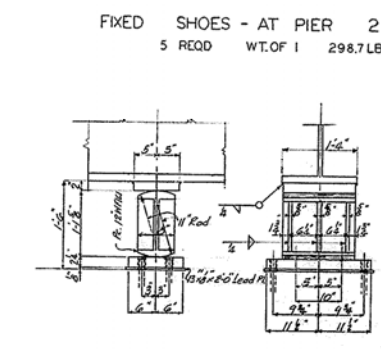
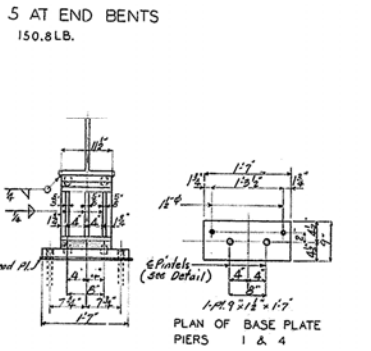
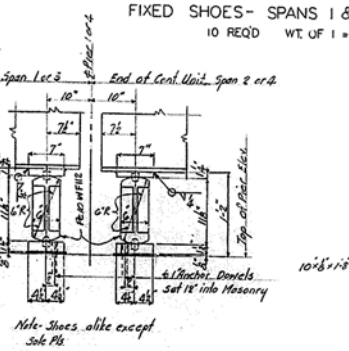
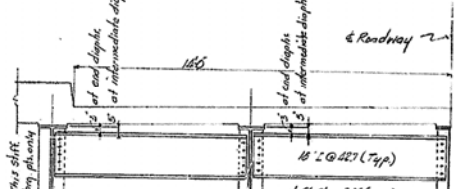
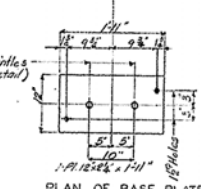
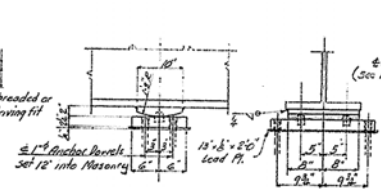
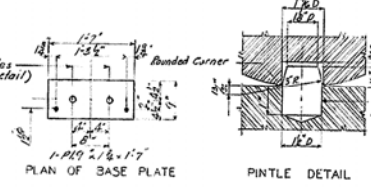
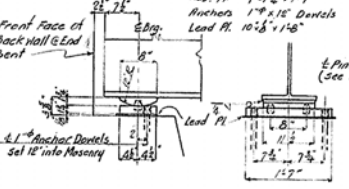
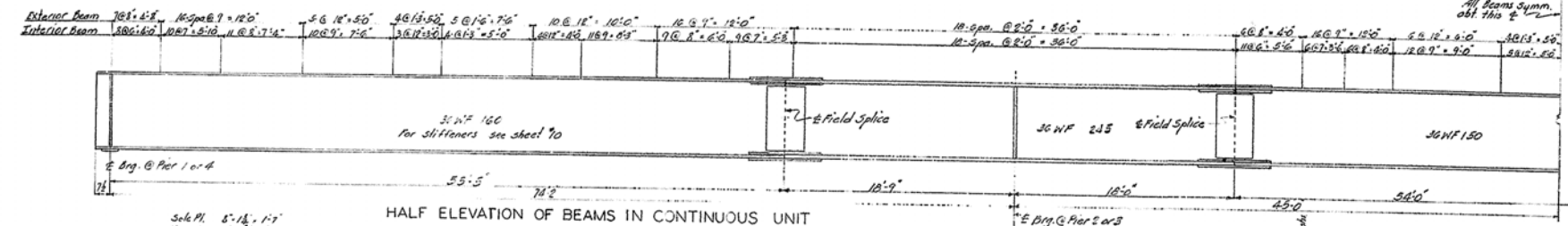
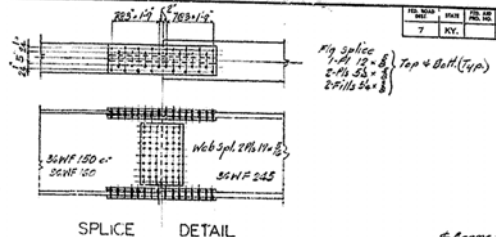
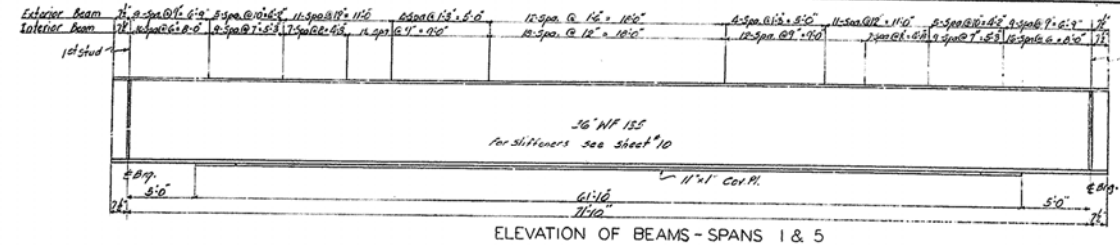
EXPANSION DAM DETAIL
 FLOOR DRAIN DETAIL
 SHEAR CONNECTOR DETAILS
 FRAMING PLAN

ET. 151 OVER EAST FORK CLARK RIVER SHEET 10

COMMONWEALTH OF KENTUCKY
 DEPARTMENT OF HIGHWAYS
 FRANKFORT
 COUNTY OF
MCCracken
 REIDLAND-MAYFIELD (KY 13)
 ROAD

STATION 29+76.0 PROJECT NO. 15634

REV.	NO.	DATE	BY	CHKD.
7				



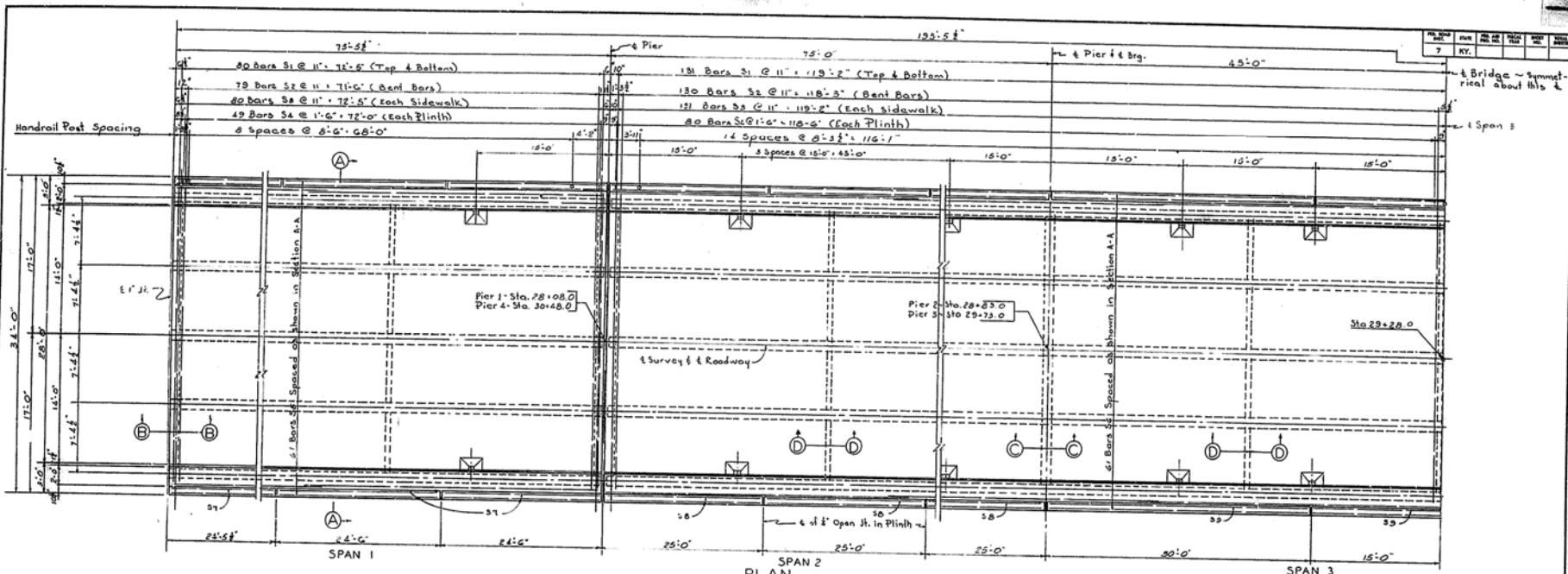
EXPANSION SHOES - AT PIERS 1 & 4
 10 REQD. WT. OF 1 (SIMPLE SPANS) 269.2 LB.
 10 REQD. WT. OF (CONT. UNIT) 257.8 LB.

EXPANSION SHOES - AT PIER 3
 5 REQD. WT. OF 1 491.4 LB.

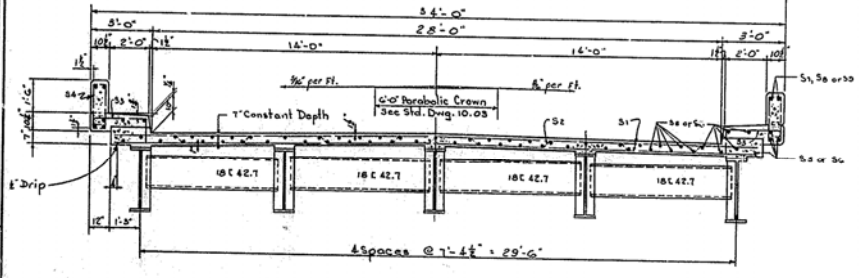
DIAPHRAGMS
 COVER PLATES
 SHOES
 SPLICES
 STRINGERS

COMMONWEALTH OF KENTUCKY
 DEPARTMENT OF HIGHWAYS
 FRANKFORT
 COUNTY OF
 McCRACKEN
 REIDLAND - MAYFIELD (K1131)
 ROAD
 STATION 29+28 PROJECT NO.
 BRIDGE NUMBER 15634

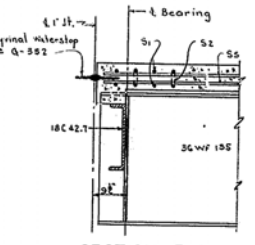
DRAWN BY: J. B. H. CHECKED BY: J. B. H. DATE: 11/15/54
 SCALE: AS SHOWN
 SHEET NO. 11 OF 11
 PROJECT NO. 29+28
 BRIDGE NO. 15634



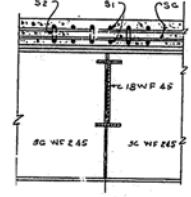
PLAN



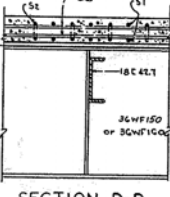
SECTION A-A



SECTION B-B



SECTION C-C



SECTION D-D

BILL OF REINFORCEMENT					
MARK	TYPE	NO.	SIZE	LENGTH	LOCATION
S1	STR	645	#5	171'-0"	Slab
S2	O	612	#5	12'-0"	Slab
S3	O	612	#5	12'-0"	Sidewalk
S4	O	516	#6	6'-0"	Plinth
S5	STR	244	#6	37'-0"	Slab & Sidewalk
S6	-	566	#7	4'-0"	Plinth
S7	-	24	#4	24'-0"	Plinth
S8	-	24	#4	24'-0"	Plinth
S9	-	78	#9	8'-0"	Plinth

ESTIMATE OF QUANTITIES
 CONCRETE CLASS A 383.6 C.Y.
 REINFORCEMENT 67699. LBS

COMMONWEALTH OF KENTUCKY
 DEPARTMENT OF HIGHWAYS
 FRANKFORT
 COUNTY OF
MCCRACKEN
 REIDLAND - MAYFIELD (KY 131)
 ROAD NO. 40
 STATION 23+28.0 PROJECT NO. 15534

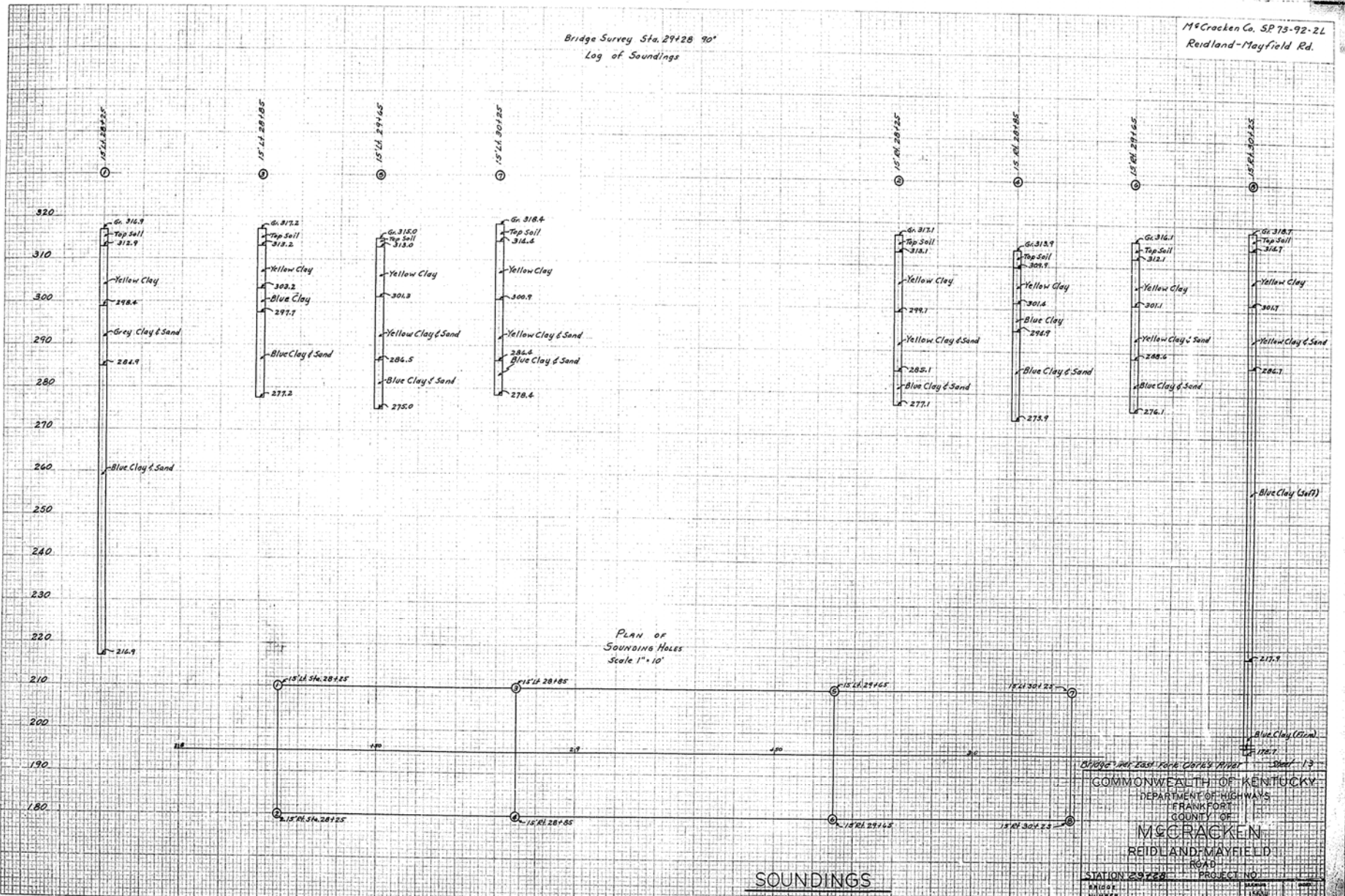
SLAB

Bridge Survey Sta. 29+28 90'
Log of Soundings

M^cCracken Co. SP 75-92-2L
Reidland-Mayfield Rd.

ORIGINAL SURVEY
DATE
BY
CHECKED
DATE
BY

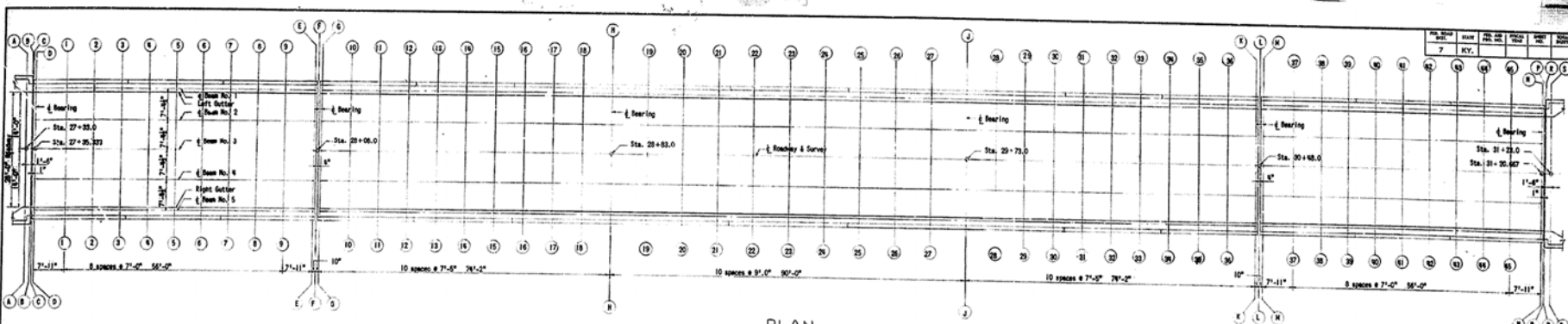
DATE
BY
CHECKED
DATE
BY



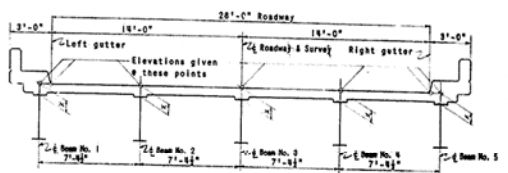
SOUNDINGS

COMMONWEALTH OF KENTUCKY
DEPARTMENT OF HIGHWAYS
FRANKFORT
COUNTY OF
M^cCRACKEN
REIDLAND-MAYFIELD
ROAD
STATION 29+28 PROJECT NO.
DRAWING NUMBER 1555

PLATE 3 CROSS SECTION 4 x 4 x 4 STEEL
100' SEE PLAN FOR DIMENSIONS
1555/20-12-200-02



PLAN
(SHOWING GRID LINES AND SPACING)



SECTION THRU SPAN

CONSTRUCTION NOTE:

1. Take elevations on top of beam at points indicated after all diaphragms are in place but before forms for pouring slab are in place. Read elevations to three decimals using target rod and enter readings under "ELEVATIONS TOP OF STEEL".
2. Compute ordinate "x" as follows: "ELEVATION TOP OF SLAB" minus "ELEVATION TOP OF STEEL" equals ordinate "x". "ELEVATION TOP OF SLAB" includes camber due to the weight of concrete deck.
3. For setting templates measure ordinate "x" above top of beam. Do not set template by elevations.
4. Construct handrail plinth to sidewalk grade. Do not add camber to handrail plinth.

Beam No.	BEAM NO. 1		BEAM NO. 2		BEAM NO. 3		BEAM NO. 4		BEAM NO. 5	
	Station	Elevation	Station	Elevation	Station	Elevation	Station	Elevation	Station	Elevation
1	27+55.0	48.1	27+55.0	48.1	27+55.0	48.1	27+55.0	48.1	27+55.0	48.1
2	27+55.0	48.1	27+55.0	48.1	27+55.0	48.1	27+55.0	48.1	27+55.0	48.1
3	27+55.0	48.1	27+55.0	48.1	27+55.0	48.1	27+55.0	48.1	27+55.0	48.1
4	27+55.0	48.1	27+55.0	48.1	27+55.0	48.1	27+55.0	48.1	27+55.0	48.1
5	27+55.0	48.1	27+55.0	48.1	27+55.0	48.1	27+55.0	48.1	27+55.0	48.1
6	27+55.0	48.1	27+55.0	48.1	27+55.0	48.1	27+55.0	48.1	27+55.0	48.1
7	27+55.0	48.1	27+55.0	48.1	27+55.0	48.1	27+55.0	48.1	27+55.0	48.1
8	27+55.0	48.1	27+55.0	48.1	27+55.0	48.1	27+55.0	48.1	27+55.0	48.1
9	27+55.0	48.1	27+55.0	48.1	27+55.0	48.1	27+55.0	48.1	27+55.0	48.1
10	27+55.0	48.1	27+55.0	48.1	27+55.0	48.1	27+55.0	48.1	27+55.0	48.1
11	27+55.0	48.1	27+55.0	48.1	27+55.0	48.1	27+55.0	48.1	27+55.0	48.1
12	27+55.0	48.1	27+55.0	48.1	27+55.0	48.1	27+55.0	48.1	27+55.0	48.1
13	27+55.0	48.1	27+55.0	48.1	27+55.0	48.1	27+55.0	48.1	27+55.0	48.1
14	27+55.0	48.1	27+55.0	48.1	27+55.0	48.1	27+55.0	48.1	27+55.0	48.1
15	27+55.0	48.1	27+55.0	48.1	27+55.0	48.1	27+55.0	48.1	27+55.0	48.1
16	27+55.0	48.1	27+55.0	48.1	27+55.0	48.1	27+55.0	48.1	27+55.0	48.1
17	27+55.0	48.1	27+55.0	48.1	27+55.0	48.1	27+55.0	48.1	27+55.0	48.1
18	27+55.0	48.1	27+55.0	48.1	27+55.0	48.1	27+55.0	48.1	27+55.0	48.1
19	27+55.0	48.1	27+55.0	48.1	27+55.0	48.1	27+55.0	48.1	27+55.0	48.1
20	27+55.0	48.1	27+55.0	48.1	27+55.0	48.1	27+55.0	48.1	27+55.0	48.1
21	27+55.0	48.1	27+55.0	48.1	27+55.0	48.1	27+55.0	48.1	27+55.0	48.1
22	27+55.0	48.1	27+55.0	48.1	27+55.0	48.1	27+55.0	48.1	27+55.0	48.1
23	27+55.0	48.1	27+55.0	48.1	27+55.0	48.1	27+55.0	48.1	27+55.0	48.1
24	27+55.0	48.1	27+55.0	48.1	27+55.0	48.1	27+55.0	48.1	27+55.0	48.1
25	27+55.0	48.1	27+55.0	48.1	27+55.0	48.1	27+55.0	48.1	27+55.0	48.1
26	27+55.0	48.1	27+55.0	48.1	27+55.0	48.1	27+55.0	48.1	27+55.0	48.1
27	27+55.0	48.1	27+55.0	48.1	27+55.0	48.1	27+55.0	48.1	27+55.0	48.1
28	27+55.0	48.1	27+55.0	48.1	27+55.0	48.1	27+55.0	48.1	27+55.0	48.1
29	27+55.0	48.1	27+55.0	48.1	27+55.0	48.1	27+55.0	48.1	27+55.0	48.1
30	27+55.0	48.1	27+55.0	48.1	27+55.0	48.1	27+55.0	48.1	27+55.0	48.1
31	27+55.0	48.1	27+55.0	48.1	27+55.0	48.1	27+55.0	48.1	27+55.0	48.1
32	27+55.0	48.1	27+55.0	48.1	27+55.0	48.1	27+55.0	48.1	27+55.0	48.1
33	27+55.0	48.1	27+55.0	48.1	27+55.0	48.1	27+55.0	48.1	27+55.0	48.1

* K GRID LINE # 20 - * 26 - TOP OF COVER PLATE.

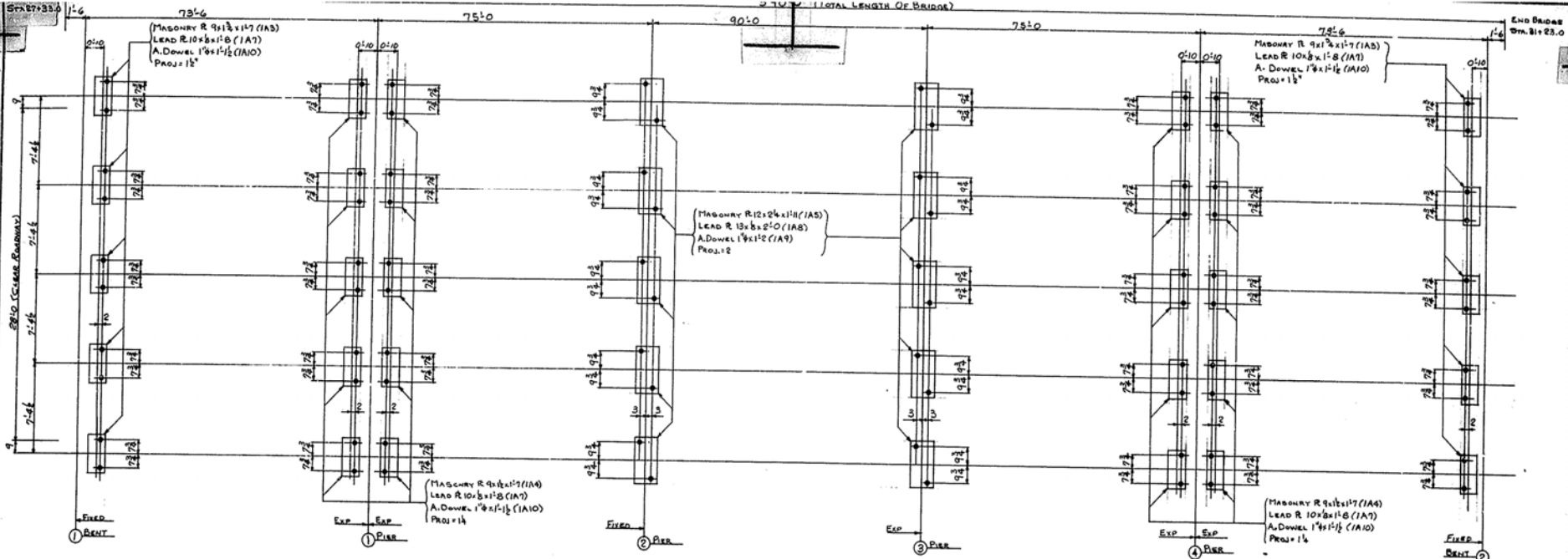
ELEVATIONS

COMMONWEALTH OF KENTUCKY
DEPARTMENT OF HIGHWAYS
FRANKFORT
COUNTY OF
MCCracken
REIDLAND - MAYFIELD (KY 131)
ROAD

STATION 29+28.0 PROJECT NO. 15630

BRIDGE NUMBER 15630

DESIGNED BY: J. D. ...
CHECKED BY: ...
DATE: ...



ANCHOR BOLT SETTING PLAN



Dwg # 15634

Sheet 1

GENERAL NOTE:
ANCHOR BOLTS MUST BE SET ACCURATELY TO LOCATION, ELEVATION AND PROTECTION BENCH. THREADS MUST BE LEFT FREE OF FOREIGN MATTER AND PROTECTED AGAINST RUST TO INSURE FREE MOVEMENT OF NUT. IF GOLF PLATES ARE USED, THEY MUST BE SET LEVEL AND TO EXACT GRADE BY GENERAL CONTRACTOR AT LEAST THREE DAYS PRIOR TO ERECTION OF STEEL.

ERECTION PLAN REF.		DESIGN DRAWING REF. 15634	
REVISIONS			
NO.	DATE	BY	REVISION
1	7/26/63	RE	APPROVAL
2			
3			
4			
5			
6			
7			
8			
9			
10			
11			
12			
13			
14			
15			
16			

PIDGON THOMAS
IRON COMPANY
MEMPHIS, TENN.

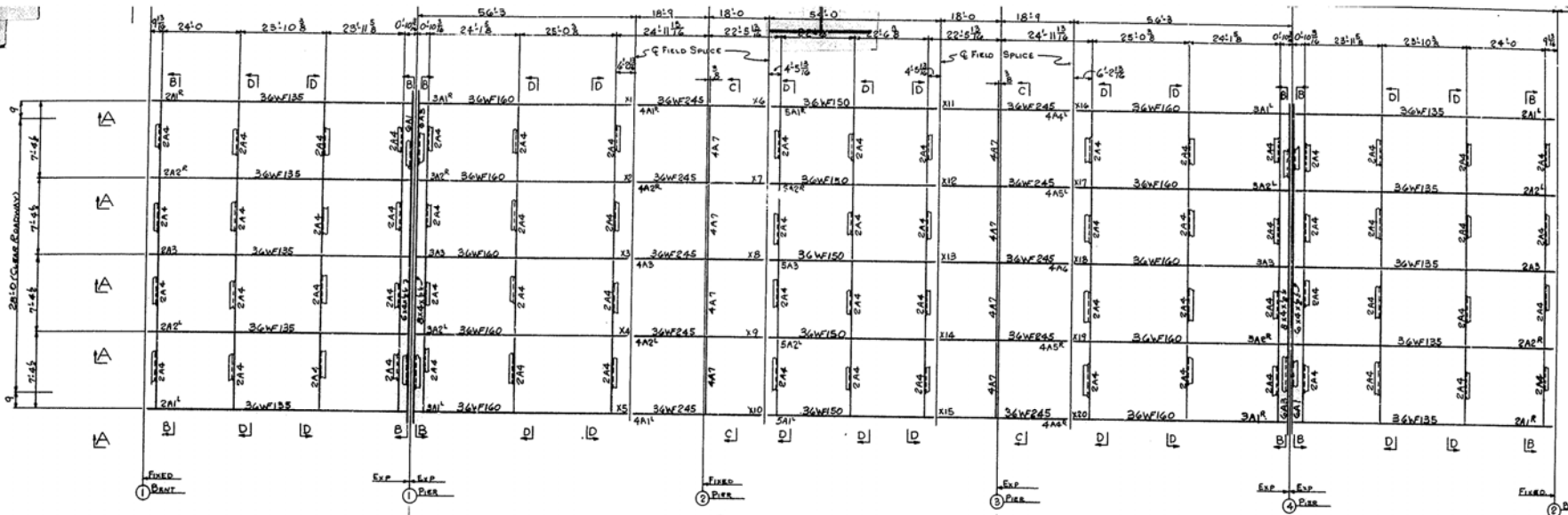
ABOLT SETTING PLAN
M. P. 23-82

ENGINEER: M. C. CRACKEN COUNTY, KENTUCKY
DRAWN BY: J. B. MICHAEL COUNTY, CO.
CHECKED BY: KENTUCKY, HWY. DEPT.
SCALE: AS SHOWN

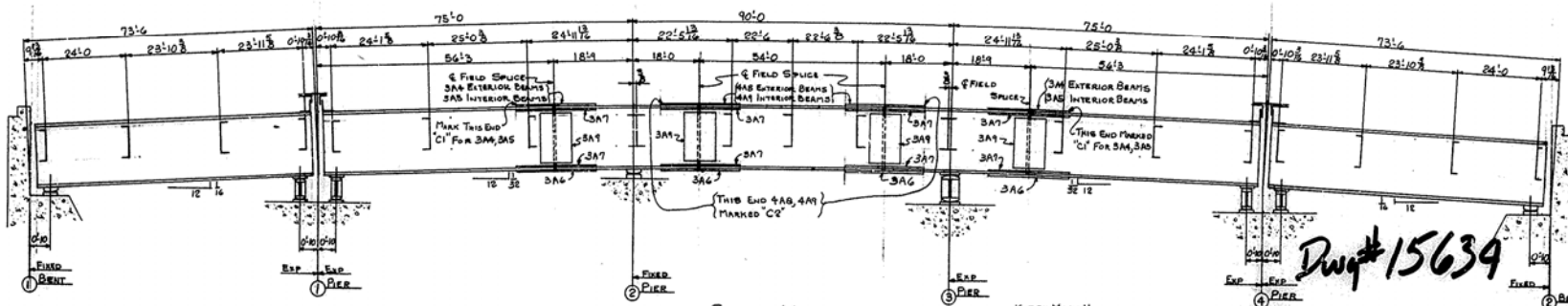
APPROVED: [Signature] DATE: 7-23-63

BY: EKH 10-23-63 5582 E1

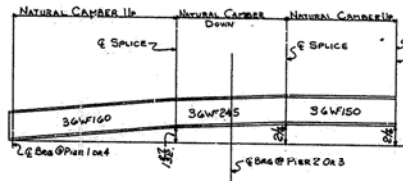
In Charge D.E. HADDER



STEEL ERECTION PLAN
 (DIAPHRAGMS BETWEEN BEAMS WITH 18" FLANGES - 18C@427)
 (ALL OTHER DIAPHRAGMS - 18WF45)



SECTION AA



SHOP BLOCKING DIAGRAM

NOTE:
 SEE SHEET E3 FOR SECTIONS
 & BENT DETAILS.

Dwg# 15639

Sheet 2

WATCH MARK NOTE:
 NUMBERS SHOWN THUS 11, 12 AND ETC. ARE WATCH MARKS. SPICE HAS
 BEEN REAMED IN SHOP WHILE ASSEMBLED AND ALL COMPONENT
 PARTS CARRY THE CORRESPONDING MARK, AND MUST BE FIT UP IN
 THE SAME MANNER IN THE FIELD, TO INSURE PROPER FIT.

SECTION NOTE:
 HORIZONTAL FRAMING SHALL BE
 ERECTED WITH MARK IN SAME LOCATION
 AS IT APPEARS ON FRAMING PLAN. IF
 MARK APPEARS IN CENTER OF MEMBER
 OR PLAN NUMBER IS SPHERICAL AND
 MAY BE TURNED END FOR END.
 FIELD CORNERS & H-TEN BOLTS
 EXCEPT AS NOTED
 H-TEN BOLTS ARE 2" WASHDRUM TYPE

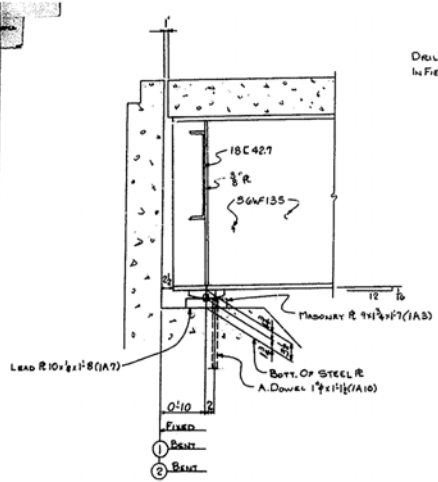
ERECTION PLANNER		DESIGN DRAWING REF.	
REVISIONS		E, 10, 11	
NO.	DATE	BY	REASON
1			
2			
3			
4			
5			
6			
7			
8			
9			
10			
11			
12			
13			
14			

PIDGEOON THOMAS
IRON COMPANY
 MEMPHIS, TENN.

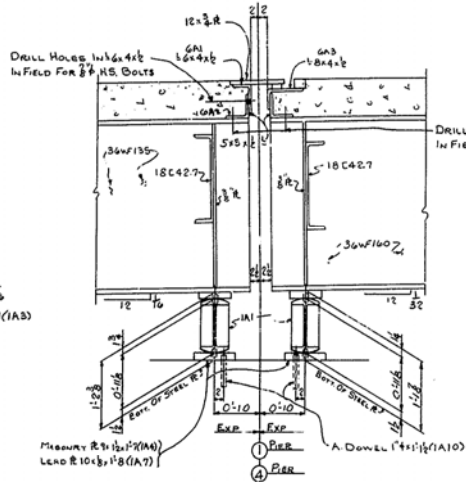
PROJECT: STEEL ERECTION PLAN
 NO. SP 73-92
 HOME: PULASKI COUNTY, KENTUCKY
 NEW: W. L. B. TIGHE & COMPANY, C.C.
 HOME: KENTUCKY HIGHWAY DEPT.
 NUMBER: SAME
 DRAWN: E.R.W. and J.T.H.
 CHECKED: R.M.H. - 10-1-40
 DATE: 10-1-40

DRAWING NO. 8582
 SHEET NO. E2

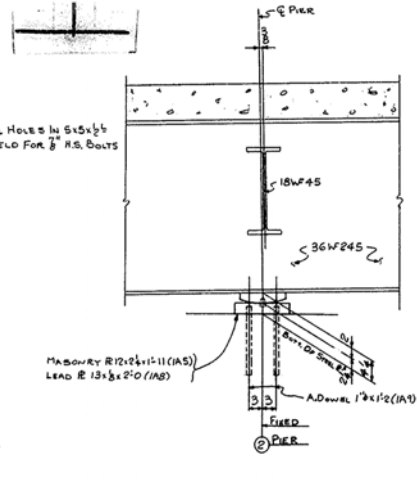
In Charge, B.E. HARDER



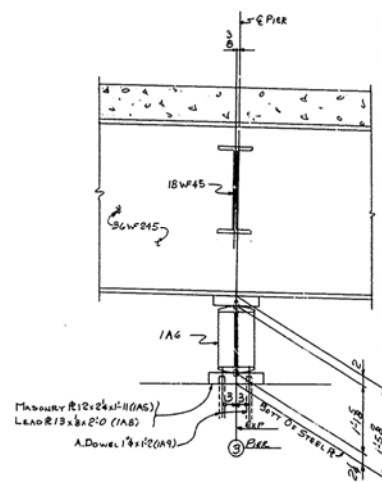
TYPICAL DETAIL @ BENT #1 (As Shown)
TYPICAL DETAIL @ BENT #2 (Opp. Hand)



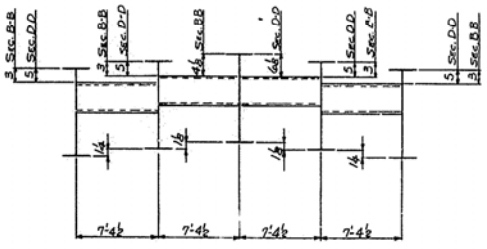
TYPICAL DETAIL @ Pier #1 (As Shown)
TYPICAL DETAIL @ Pier #A (Opp. Hand)



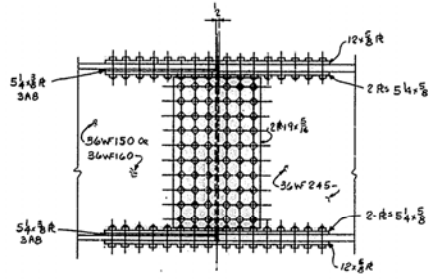
TYPICAL DETAIL @ Pier #2



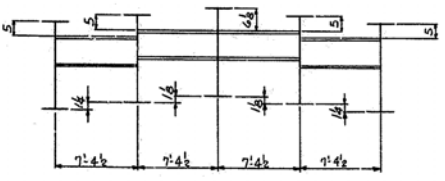
TYPICAL DETAIL @ Pier #3



SECTION B-B
SECTION D-D



DETAIL OF TYPICAL FIELD SPlice



SECTION C-C

Dwg # 15634

Sheet 3

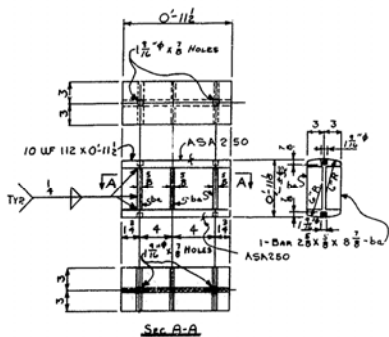
ERECTION PLAN REF.	E2		
DESIGN DRAWING REF.	2,10,11		
REVISIONS			
NO.	DATE	BY	REVISION
1	7-26-11	REH	APPROVAL
2			
3			
4			
5			
6			
7			
8			
9			
10			
11			
12			
13			
14			
15			
16			

PIDGEON THOMAS
IRON COMPANY
MEMPHIS, TENN.

SECTIONS & BENT DETAILS
 NO. SP-73-32
 COUNTY: MORGAN COUNTY, KENTUCKY
 JOB: R.D. MICHAEL COURT CO.
 COUNTY: KENTUCKY, HWY. DEPT.
 DRAWN: SAME
 CHECKED: E.E.W. 9-2-11
 DESIGNED: REH 10-2-11
 PROJECT NO.: 3582
 SHEET NO.: E.3

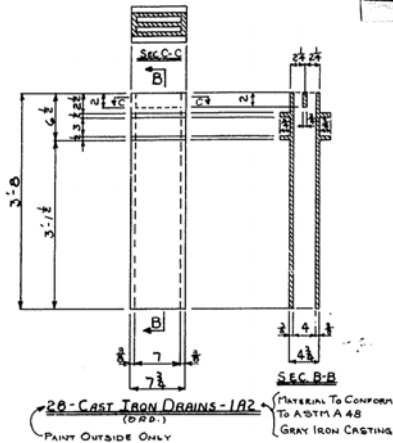
NOTE:
WORK THIS SHEET WITH SHEET E2

In Charge: B.E. HARPER

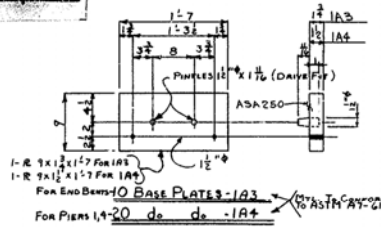


20 EXPANSION SHOES - 1A1 (MTL To Conform To ASTM A333-507) (For Piers 1 & 4)

NOTE TO MACHINE SHOP REGARDING 1A1 & 1A6
 ① MACHINE SHOP IS TO PERFORM ALL FINISHING AND DRILL 1 1/2" x 3/8" HOLES.
 ② P.T.I. Co. WILL FURNISH ALL MATERIAL.
 ③ P.T.I. Co. WILL PERFORM ALL OTHER FABRICATION.

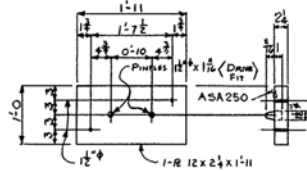


20-CAST IRON DRAINS - 1A2 (MATERIAL TO CONFORM TO ASTM A 48 GRAY IRON CASTING) (PAINT OUTSIDE ONLY)

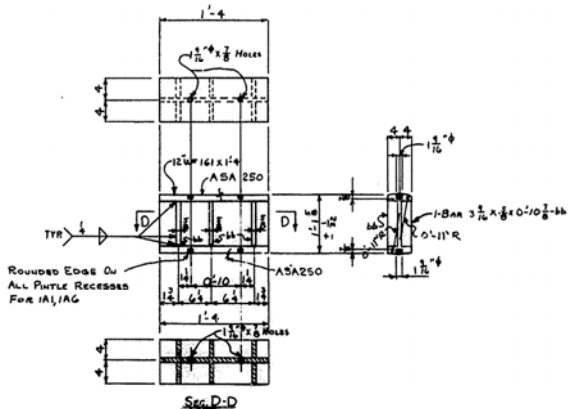


10-BASE PLATES - 1A3 (MTL To Conform To ASTM A7-617) (For Piers 1, 4, 20 de de - 1A4)

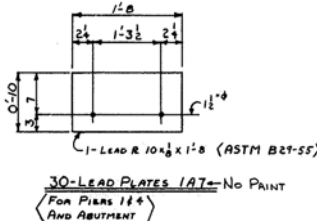
NOTE TO MACHINE SHOP REGARDING 1A3, 1A4 & 1A6
 ① MACHINE SHOP IS TO DRILL HOLES FOR PILES, MAKE & INSTALL PILES.
 ② PERFORM ALL FINISHING.
 ③ P.T.I. Co. WILL PERFORM ALL OTHER FABRICATION.
 ④ P.T.I. Co. WILL FURNISH ALL MATERIAL.



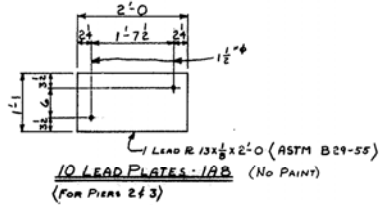
10-BASE PLATES - 1A5 (MTL To Conform To ASTM A7-617) (For Piers 2, 3)



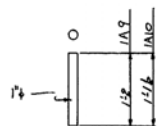
5-EXPANSION SHOES - 1A6 (MTL To Conform To ASTM A333-507) (For Pier 3)



30-LEAD PLATES - 1A7 - No PAINT (For Piers 1 & 4 AND ABUTMENT)



10-LEAD PLATES - 1A8 (No PAINT) (For Piers 2 & 3)



20-ANCHOR DOWELS - 1A9 - No PAINT
 60-ANCHOR DOWELS - 1A10 - No PAINT

NO.	MATERIAL	SHAPE	LENGTH	AMOUNT	REMARKS	ORDERED	QUANTITY	REVISION
1	20 EXPANSION SHOES	1A1	49'-0"	10				
2	20 WF 10 @ 112	0-112						
3	120 BARS	0-9 1/2						
4	28 CAST IRON DRAINS	1A2						
5	10 BASE PLATES	1A3						
6	10 BARS	1-7						
7	20 BASE PLATES	1A4						
8	20 BARS	1-7						
9	10 BASE PLATES	1A5						
10	10 BARS	1-11						
11	5 EXPANSION SHOES	1A6						
12	5 BARS	1-4						
13	30 LEAD PLATES	1A7						
14	10 LEAD PLATES	1A8						
15	20 ANCHOR DOWELS	1A9						
16	60 ANCHOR DOWELS	1A10						

Dwg # 15634

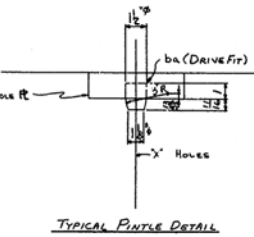
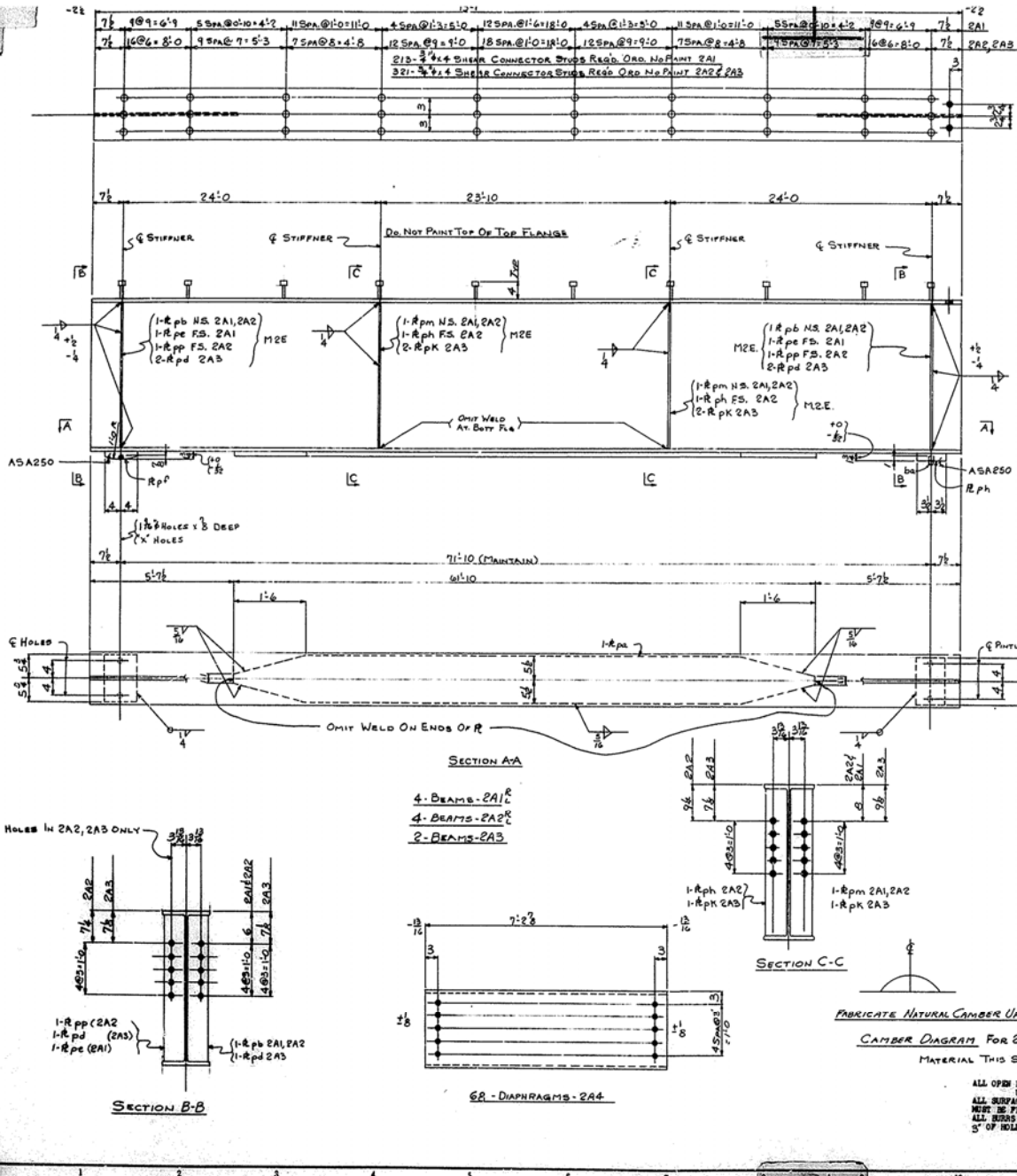
NO.	DATE	BY	REVISION
1	10/11	BEH	APPROVAL
2	10/11	BEH	OK PER MR. SMITH

Sheet 4

PIDGON THOMAS PIRON COMPANY
 MEMPHIS, TENN.

SHOUL MASONRY, RAILS & DRAINS
 S.P. 73-92 M. CRACKEN COUNTY, KY
 MOUNTAIN M. CRACKEN COUNTY, KY
 CHAS. W. J.B. MICHEL CONST. CO.
 CONTRACTOR
 KENTUCKY HIGHWAY DEPT.
 CONTRACT NO. HNN-100-2254
 SHEET NO. 3582 OF 1

In Charge: BE HASPER



NO.	MATERIAL	SHAPE	LENGTH	APPROX. QUANTITY	REMARKS	ORDERED QUANTITY	ORDERED PRICE
1	4-BEAMS-2A1						
2	4-BEAMS-2A2						
3	2-BEAMS-2A3						
4							
5	10-RF36	HS 73	1		731	A36	
6	278	3/4" STUPE	Feed		Ord	A10	C 1015
7	10-R 8 1/2	0 1/2" pf			(En From 18' 6")	A7	A36
8	10-R 7 1/2	0 1/2" ph			(En From 18' 6")	A7	A36
9	10-R 11	61 10	ps		610	A36	
10	16-R 5 1/2	2 9/8	ph		2A1, 2A2	A36	
11	8-R 5 1/2	2 9/8	pd		2A3	A36	
12	8-R 5 1/2	2 9/8	pe		2A1	A36	
13	20-R 1/4	0 1/2	ph		2A1	A7	A36
14	8-R 5 1/2	2 9/8	pp		2A1	A36	
15	16-R 5 1/2	2 9/8	pm		2A1, 2A2	A36	
16	8-R 5 1/2	2 9/8	ph		2A2	A36	
17	8-R 5 1/2	2 9/8	pk		2A3	A36	
18							
19							
20	6A	Diaphragms-2A4					
21	6R18	18 @ 27' 2 1/2"			18 @ 27' 2 1/2"	A7	A36
22							
23							
24							
25							
26							
27							
28							
29							
30							
31							
32							
33							
34							
35							
36							
37							
38							
39							
40							
41							
42							
43							
44							
45							
46							
47							
48							
49							
50							
51							
52							
53							
54							
55							

Dwg #1563A

SHOP NOTE
SHOP CONTACT SURFACES NOT PAINTED

Sheet 5

MEMBER OF

PIGEON THOMAS
IRON COMPANY

MELROSE, TENN.

ERECTOR PLAN REF.	E1, E2, E3		
DESIGN DRAWING REF.	10, 11		
REVISIONS			
NO.	DATE	BY	REASON
1	10/10/54	BEH	APPROVAL
2	10/10/54	BEH	
3			
4			
5			
6			
7			
8			

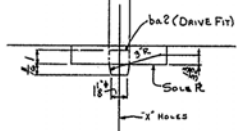
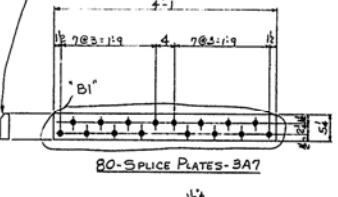
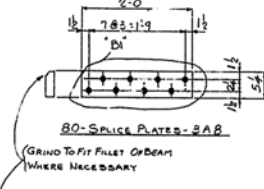
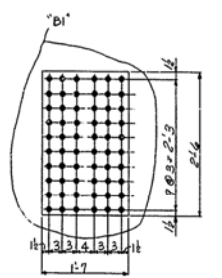
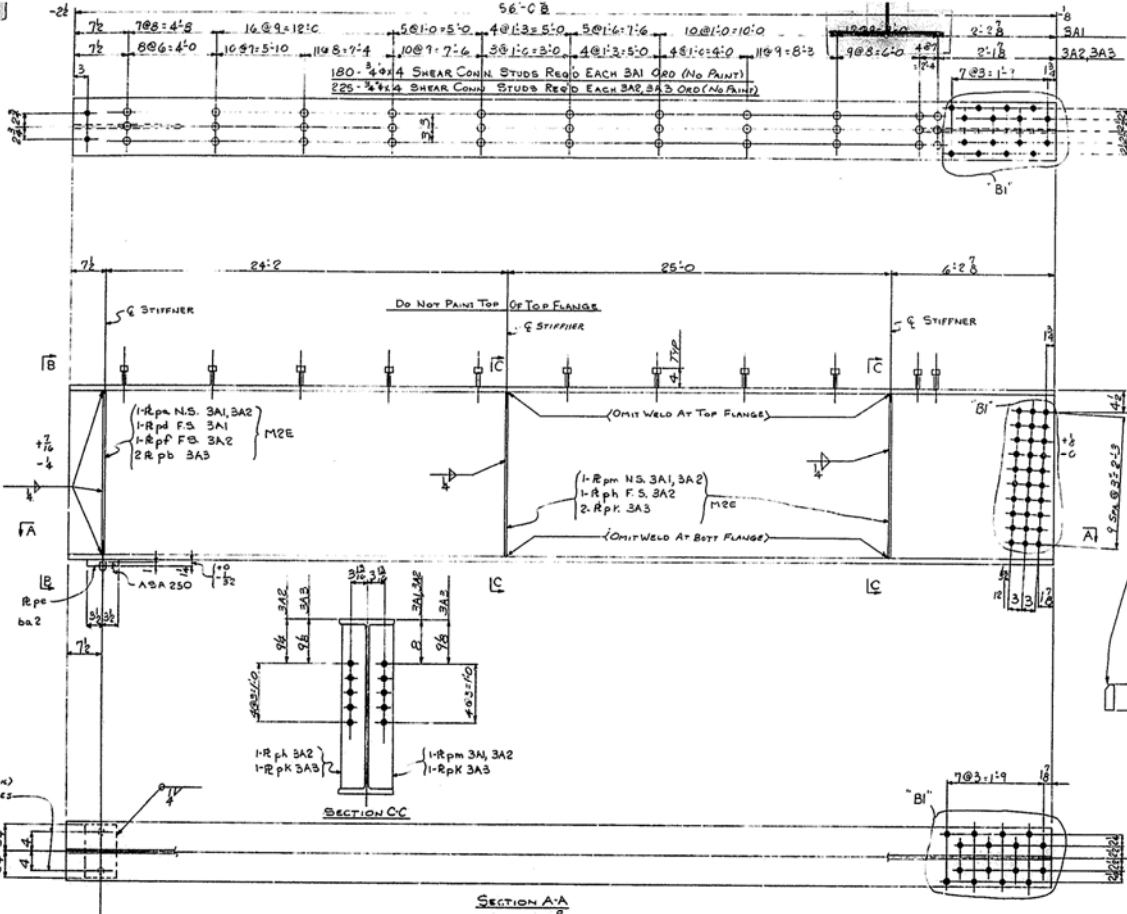
DESIGNER: I.C. FROST
CHECKED: T. G. B. B. B.
DRAWN: T. G. B. B. B.
APPROVED: S.A.M.
DATE: 10/10/54
FIELD OFFICE: 3582
SCALE: 2

ALL OPEN HOLES ARE FOR HI-TENSILE BOLTS UNLESS MARKED "X" HOLES. ALL SURFACES TO BE HI-TENSILE BOLT CORNS. MUST BE FLAT, FREE OF LOOSE MILL SCALE, ALL BURRS REMOVED, AND CLEANED WITHIN 5' OF HOLES, AND NOT BE PAINTED.

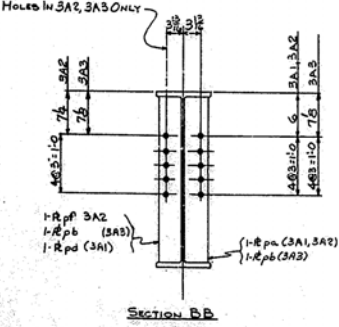
In Charge: BE HARPER

BILL OF MATERIAL

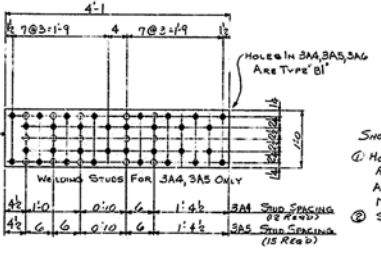
LINE	QUANTITY	MATERIAL	REMARKS	ORDERED	QUANTITY	REMARKS
1	4	Beams-3A1				
2	4	Beams-3A2				
3	2	Beams-3A3				
4	10	3/4" x 3/4" Shear Conn Studs				
5	20	3/4" x 3/4" Shear Conn Studs				
6	2	R 1/2" x 2 1/4" pn	3A1, 3A2			
7	4	R 1/2" x 2 1/4" pn	3A1, 3A2			
8	4	R 1/2" x 2 1/4" pn	3A1			
9	10	R 1/2" x 2 1/4" pn	3A1, 3A2			
10	10	R 1/2" x 2 1/4" pn	3A1, 3A2			
11	10	R 1/2" x 2 1/4" pn	3A1, 3A2			
12	4	R 5/8" x 2 1/4" pn	3A2			
13	16	R 5/8" x 2 1/4" pn	3A1, 3A2			
14	8	R 5/8" x 2 1/4" pn	3A2			
15	8	R 5/8" x 2 1/4" pn	3A3			
16	8	R 5/8" x 2 1/4" pn	3A3			
17						
18						
19	80	SPlice Plates-3A9				
20	80	SPlice Plates-3A9				
21	40	R 1 1/2" x 4"				
22						
23						
24						
25						
26	40	SPlice Plates-3A7				
27	40	R 1 1/2" x 4"				
28						
29	80	SPlice Plates-3A8				
30	80	R 1 1/2" x 4"				
31						
32						
33	4	Plates-3A4				
34	6	Plates-3A5				
35	20	Plates-3A6				
36	50	R 1 1/2" x 4"				
37	130	3/4" x 3/4" Shear Conn Studs	3A5, 3A6			
38						
39						
40						
41						
42						
43						
44						
45						
46						
47						
48						
49						
50						
51						
52						
53						
54						
55						
56						
57						
58						
59						
60						
61						
62						
63						
64						
65						
66						



Dwg # 15634



SECTION A-A
4 BEAMS-3A1
4 BEAMS-3A2
2 BEAMS-3A3



SHOP NOTE
1. HOLES TO BE SURF ROUNDED 1/8" AND REAMED TO 7/8" WITH ALL PARTS ASSEMBLED
2. ALL SURFACES TO BE MATCH MARKED, USING MARKS SHOWN ON ERECTION PLAN E2
3. SHOP CONTACT SURFACES NOT PAINTED.

ALL OPEN HOLES ARE FOR HI-TENSILE BOLTS UNLESS MARKED "X" HOLES. ALL SURFACES AT HI-TENSILE BOLT CORNS. MUST BE FLAT, FREE OF LOOSE MILL SCALLS, ALL BURRS REMOVED, AND CLEANED WITHIN 3" OF HOLES, AND NOT BE PAINTED.

4 PLATES-3A4
6 PLATES-3A5
20 PLATES-3A6

MATERIAL THIS SHEET ERECTED BY OTHERS

In Charge, B.E. HARPER

Sheet 6

NO.	DATE	BY	REASON
1			
2			
3			
4			
5			
6			
7			
8			
9			
10			
11			
12			
13			
14			
15			

ERECTOR: B.E. HARPER
DESIGNER: B.E. HARPER
CHECKED: B.E. HARPER
DATE: 10/11

REVISIONS:

20 - 1/2" x 3/8" Deep Holes
5840 - 1/2" Holes

E1, E2, E3

10, 11

PIDGEON & THOMAS
PIRON COMPANY
MEMPHIS, TENN.

BEAM & SPLICE PLATE DETAILS
SP73-92

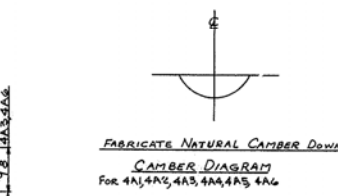
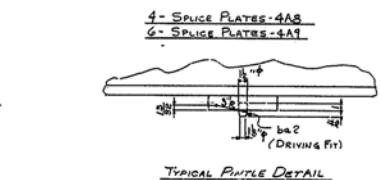
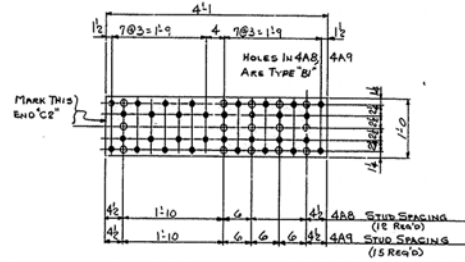
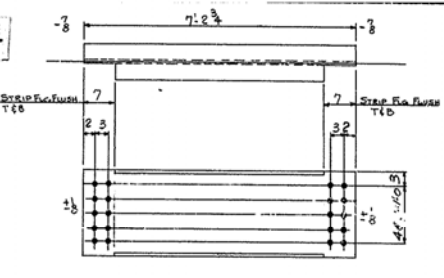
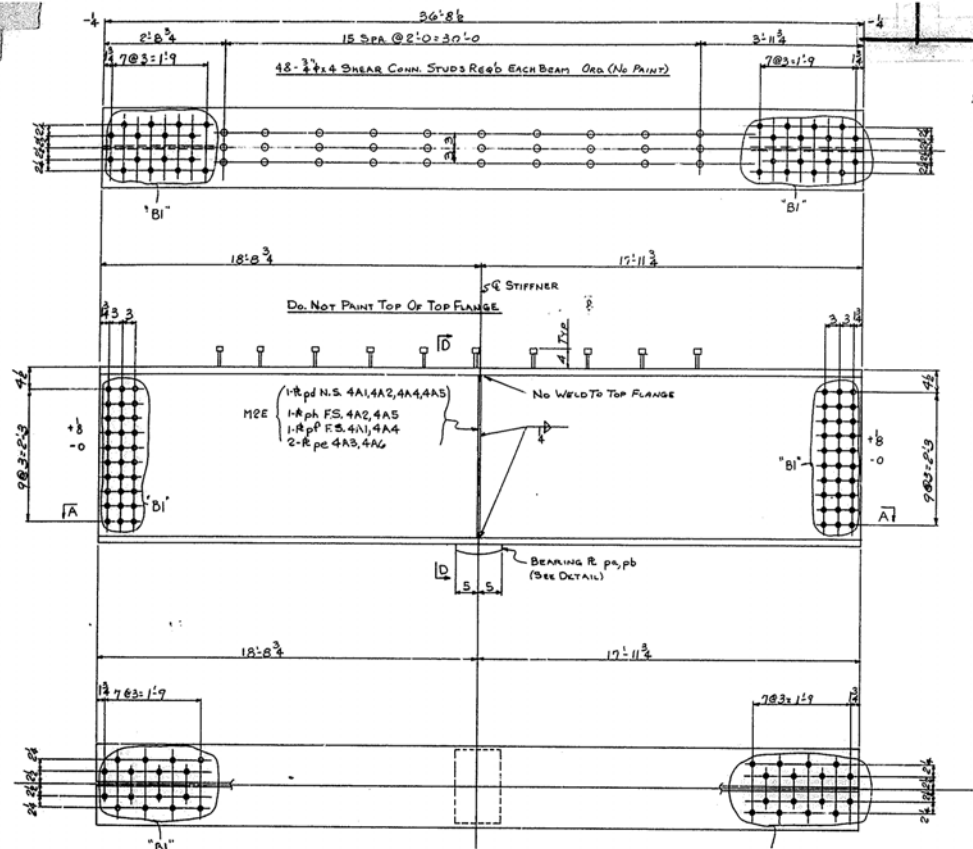
JAMES MCCRACKEN COUNTY, KENTUCKY
JOHN M. MICHAEL COUNTY, KY
KENTUCKY HWY DEPT.

SALES

APPROVAL WITH DRAWINGS

FIELD OFF.

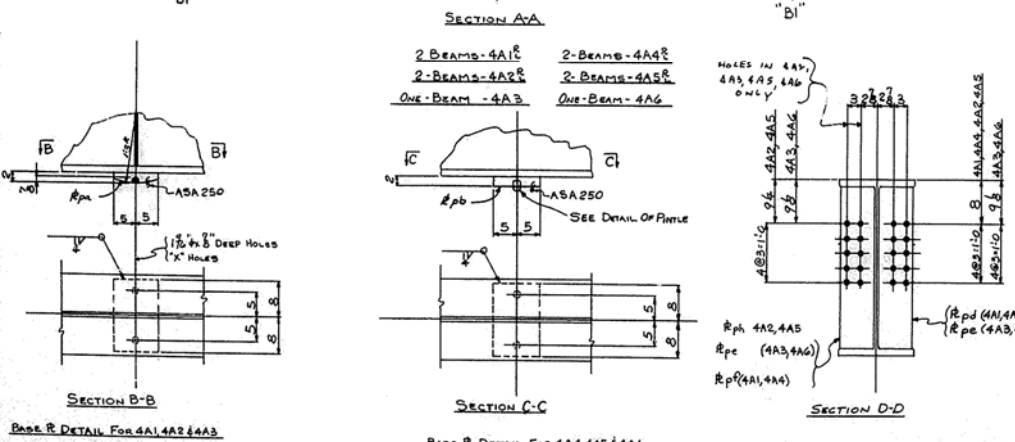
3582 3



BILL OF MATERIAL						
LINE NO.	QTY	SHAPE	LENGTH	AMOUNT	REMARKS	ORDERED
				BLDG		DATE
				WGT		
1	2	BEAMS - 4A1C				
2	2	BEAMS - 4A2C				
3	2	BEAMS - 4A3C				
4	2	BEAMS - 4A4C				
5	2	BEAMS - 4A5C				
6	ONE	BEAM - 4A6				
7	10	WELDS @ 2' 0" = 30' 0"			36' 10" A36	
8	480	3/8" X 1" SHEAR CONN. STUDS			Ord. A106	C-1016
9	5	R 10" X 1" 1/4" PL			Ord. A7	A36
10	5	R 10" X 1" 1/4" PL			do. A7	A36
11	5	R 10" X 1" 1/4" PL			4A1, 4A2, 4A4, 4A5	A36
12	4	R 7" X 2" 1/2" PL			4A4, 4A5	A36
13	4	R 7" X 2" 1/2" PL			4A1, 4A2	A36
14	4	R 7" X 2" 1/2" PL			4A2, 4A5	A36
15	5	R 10" X 1" 1/4" PL			A7	A36
16	8	DIAPHRAGMS - 4A7			A7	A36
17	8	WELDS @ 45' 7" 2 1/2"			A7	A36
18						
19						
20	4	SPICE PLATES - 4A8				
21	6	SPICE PLATES - 4A9				
22						
23	10	R 12" X 1" 1/2" PL			A36	
24	138	3/8" X 1" 1/2" SHEAR CONN. STUDS			4A8, 4A9	A106 - C-1016
25						
26						
27						
28						
29						
30						
31						
32						
33						
34						
35						
36						
37						
38						
39						
40						
41						
42						
43						
44						
45						
46						
47						
48						
49						
50						
51						
52						
53						
54						
55						
56						
57						
58						
59						
60						
61						
62						
63						
64						
65						
66						

Dwg # 15634

Sheet 7



SHOP NOTE:
 (A) HOLES IN 4A7 TO BE SUB PUNCHED 1/4" AND REAMED TO 1/2" WITH ALL PILES ASSEMBLED ALL PILES TO BE MARKED USING PILES SHOWN ON ERECTION PLAN E2
 (B) SHOP CONTACT SURFACES NOT PAINTED
 ALL OPEN HOLES ARE FOR HI-TENSILE BOLTS UNLESS MARKED OTHERWISE.
 ALL SURFACES BY HI-TENSILE BOLT CONTACT MUST BE FLAT, FREE OF LOOSE MILL SCALE, ALL BURRS REMOVED, AND CLEANED WITHIN 3" OF HOLES, AND NOT BE PAINTED.

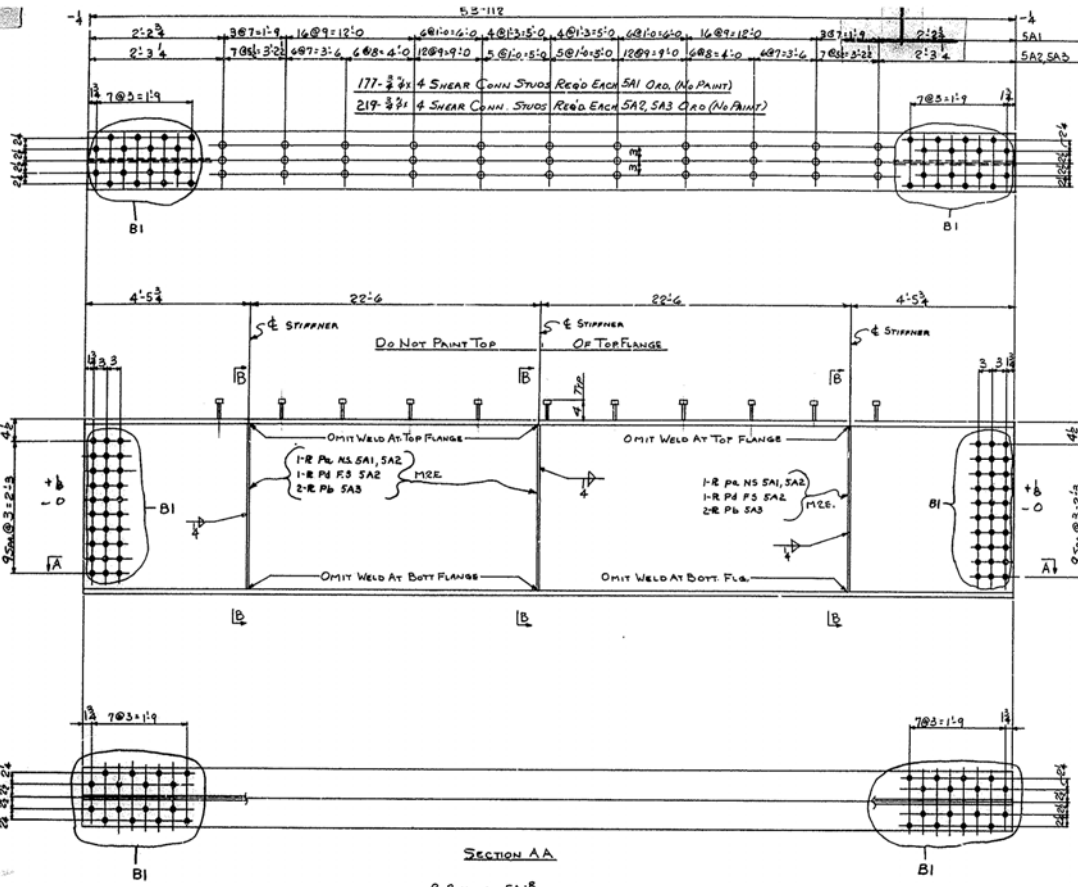
20'-1 1/2" DEEP HOLES
2200'-1 1/2" HOLES
ERECTION PLAN REF. E1, E2, E3
DESIGN DRAWING REF. 10, 11
REVISIONS
NO. DATE BY REVISION
(A) 10/21/54 BY APPROVAL
(B) 11/10/54 BY APPROVAL
(C) 11/10/54 BY APPROVAL
(D) 11/10/54 BY APPROVAL
(E) 11/10/54 BY APPROVAL
(F) 11/10/54 BY APPROVAL
(G) 11/10/54 BY APPROVAL
(H) 11/10/54 BY APPROVAL
(I) 11/10/54 BY APPROVAL
(J) 11/10/54 BY APPROVAL

PIDGEON & THOMAS IRON COMPANY
 MEMPHIS, TENN.

BRAND & SPICE PLATE DETAILS
 NO. SP-75-32

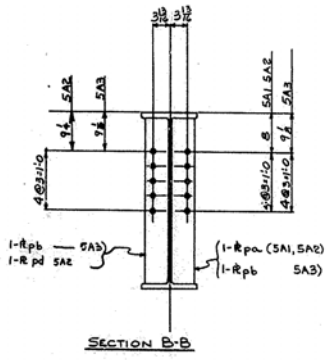
ISSUED BY: M.C. CRACKEN COUNTY, KENTUCKY
 JOHN H.B. BUCHANAN, CHAIRMAN, CO.
 COUNTY: KENTUCKY, HULL, DEPT.
 SERIAL: SAIDE
 APPROVED BY: E.E.W. 11/10/54
 CHECKED BY: J.C.J. 11/10/54

MATERIAL THIS SHEET ERECTED BY OTHERS
 In Charge: BE HARPER



SECTION AA

2 BEAMS - SA1²
 2 BEAMS - SA2²
 ONE BEAM - SA3



SECTION B-B



SHOP NOTE
 ① SHOP CONTACT SURFACES NOT PAINTED
 ② HOLES B-1 TO BE SUB PUNCHED 1/8" AND REAMED TO 1/4" HOLES WITH ALL PARTS ASSEMBLED
 ALL PARTS TO BE MATCH-MARKED, USING PLAINS SHOWN ON ERECTION PLAN E-E
 ALL OPEN HOLES ARE FOR HI-TENSILE BOLTS UNLESS MARKED "X" HOLES.
 ALL SURFACES AT HI-TENSILE BOLT CORNERS MUST BE FLAT, FREE OF LOOSE MILL SCALE, ALL BURRS REMOVED, AND CLEANED WITHIN 5' OF HOLES, AND NOT BE PAINTED.

MATERIAL THIS SHEET ERECTED BY OTHERS

By Charles R. HARPER

BILL OF MATERIAL

ITEM	MATERIAL	SHAPE	LENGTH	WEIGHT	REMARKS	ORDERED	QUANTITY	UNIT	ORDERED	QUANTITY	UNIT
1	2 BEAMS - SA1										
2	2 BEAMS - SA2										
3	ONE BEAM - SA3										
4	2 1/2" x 3/4" x 1/4" PL										
5	1011 3/8" x 1/4" x 1/4" STUOS										
6	12 8 5/8"	2 10	pd	SA1 SA2							
7	6 R 5 3/8"	2 10	pd	SA3							
8	6 R 5 3/8"	2 10	pd	SA2							

Dwg # 15634

Sheet 8

740-15" Holes

ERECTION PLAN REF. E1, E2, E3
 DESIGN DRAWING REF. 10, 11

REVISIONS

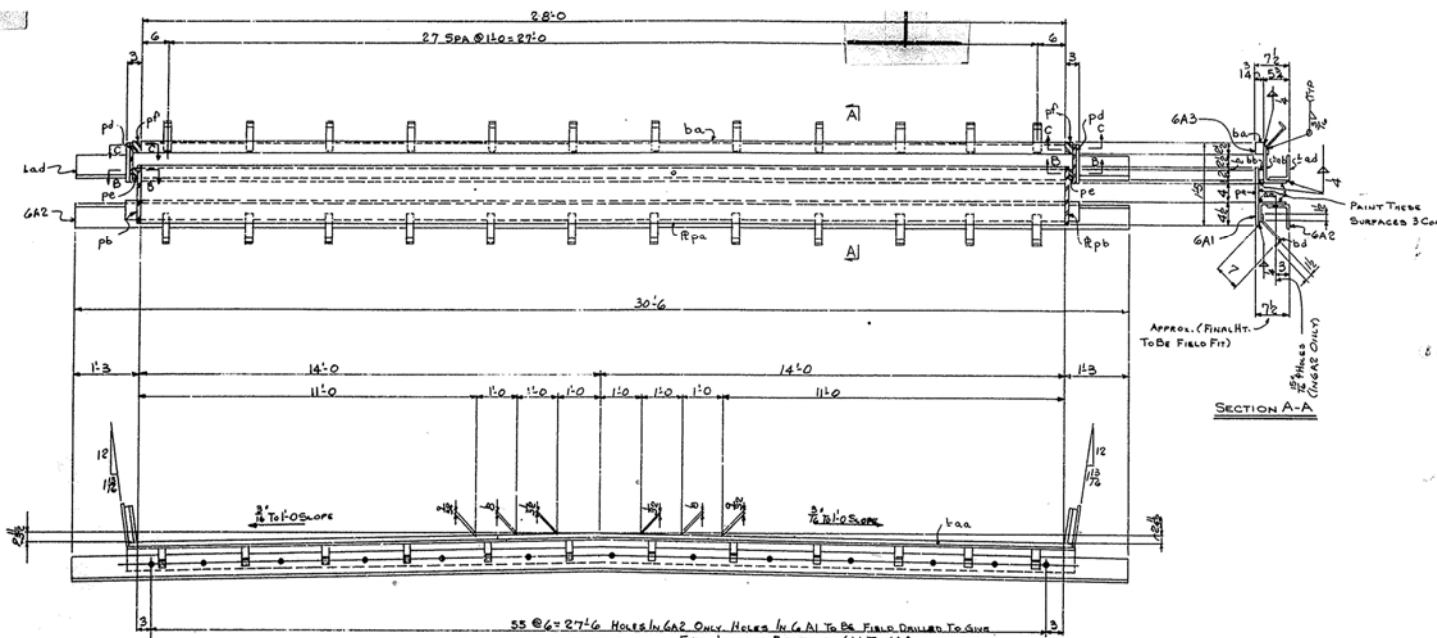
NO.	DATE	BY	REMARKS
1			
2			
3			
4			
5			
6			
7			
8			
9			
10			

APPROVAL

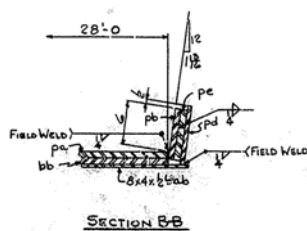
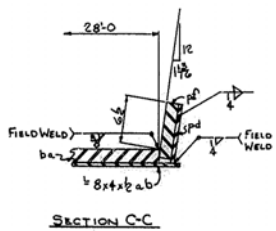
PIDGEON THOMAS IRON COMPANY
 MEMPHIS, TENN.

BEAM DETAILS
 SPEC. 573-92
 1 1/2" RED LEAD
 TYPE I CRD.
 PAINT TO BE
 APPLIED WITH
 BRUSH

MEMPHIS, TENN. 3582 5



2 EXPANSION DEVICES - GA1
 2 EXPANSION DEVICES - GA2
 2 EXPANSION DEVICES - GA3



BILL OF MATERIAL									
NO.	MATERIAL	SHAPE	LENGTH	QUANTITY	REMARKS	ORDERED	QUANTITY	ORDERED	QUANTITY
1	2	3	4	5	6	7	8	9	10
1	2 EXPANSION DEVICES - GA1								
2	2 R 1/2"		28.0	pe		GA2	A373	A36	
3	2 R 1/2"		28.0	bb			A373	A36	
4	2 R 1/2"		28.0	ba			A373	A36	
5	2 R 1/2"		28.0	pd			A373	A36	
6	2 R 1/2"		28.0	pe			A373	A36	
7	2 R 1/2"		28.0	pb			A373	A36	
8	2 R 1/2"		28.0	pa			A373	A36	
9	2 R 1/2"		28.0	pp			A373	A36	
10	2 R 1/2"		28.0	pp			A373	A36	
11	2 R 1/2"		28.0	pp			A373	A36	
12	2 R 1/2"		28.0	pp			A373	A36	
13	2 R 1/2"		28.0	pp			A373	A36	
14	2 EXPANSION DEVICES - GA2								
15	2 R 1/2"		28.0	pe		GA2	A373	A36	
16	2 R 1/2"		28.0	bb			A373	A36	
17	2 R 1/2"		28.0	ba			A373	A36	
18	2 R 1/2"		28.0	pd			A373	A36	
19	2 R 1/2"		28.0	pe			A373	A36	
20	2 R 1/2"		28.0	pb			A373	A36	
21	2 R 1/2"		28.0	pa			A373	A36	
22	2 R 1/2"		28.0	pp			A373	A36	
23	2 R 1/2"		28.0	pp			A373	A36	
24	2 R 1/2"		28.0	pp			A373	A36	
25	2 R 1/2"		28.0	pp			A373	A36	
26	2 R 1/2"		28.0	pp			A373	A36	
27	2 R 1/2"		28.0	pp			A373	A36	
28	2 R 1/2"		28.0	pp			A373	A36	
29	2 R 1/2"		28.0	pp			A373	A36	
30	2 R 1/2"		28.0	pp			A373	A36	
31	2 R 1/2"		28.0	pp			A373	A36	
32	2 R 1/2"		28.0	pp			A373	A36	
33	2 R 1/2"		28.0	pp			A373	A36	
34	2 R 1/2"		28.0	pp			A373	A36	
35	2 R 1/2"		28.0	pp			A373	A36	
36	2 R 1/2"		28.0	pp			A373	A36	
37	2 R 1/2"		28.0	pp			A373	A36	
38	2 R 1/2"		28.0	pp			A373	A36	
39	2 R 1/2"		28.0	pp			A373	A36	
40	2 R 1/2"		28.0	pp			A373	A36	
41	2 R 1/2"		28.0	pp			A373	A36	
42	2 R 1/2"		28.0	pp			A373	A36	
43	2 R 1/2"		28.0	pp			A373	A36	
44	2 R 1/2"		28.0	pp			A373	A36	
45	2 R 1/2"		28.0	pp			A373	A36	
46	2 R 1/2"		28.0	pp			A373	A36	
47	2 R 1/2"		28.0	pp			A373	A36	
48	2 R 1/2"		28.0	pp			A373	A36	
49	2 R 1/2"		28.0	pp			A373	A36	
50	2 R 1/2"		28.0	pp			A373	A36	
51	2 R 1/2"		28.0	pp			A373	A36	
52	2 R 1/2"		28.0	pp			A373	A36	
53	2 R 1/2"		28.0	pp			A373	A36	
54	2 R 1/2"		28.0	pp			A373	A36	
55	2 R 1/2"		28.0	pp			A373	A36	
56	2 R 1/2"		28.0	pp			A373	A36	
57	2 R 1/2"		28.0	pp			A373	A36	
58	2 R 1/2"		28.0	pp			A373	A36	
59	2 R 1/2"		28.0	pp			A373	A36	
60	2 R 1/2"		28.0	pp			A373	A36	
61	2 R 1/2"		28.0	pp			A373	A36	
62	2 R 1/2"		28.0	pp			A373	A36	
63	2 R 1/2"		28.0	pp			A373	A36	
64	2 R 1/2"		28.0	pp			A373	A36	
65	2 R 1/2"		28.0	pp			A373	A36	
66	2 R 1/2"		28.0	pp			A373	A36	

Dwg # 15634

SHOP NOTE
 SHOP CONTACT SURFACES NOT PRINTED

MATERIAL THIS SHEET ERECTED BY OTHERS

ALL OPEN HOLES ARE FOR HI-TENSILE BOLTS UNLESS MARKED "X" HOLES. ALL SURFACES OF HI-TENSILE BOLT CONUS MUST BE FLAT, FREE OF LOOSE MILL SCALE, ALL BURRS REMOVED, AND CLEANED WITHIN 3" OF HOLES, AND NOT BE PAINTED.

Sheet 9

114-1/2 HOLES

ERECTOR PLAN REF. E1E2E3

DESIGN DRAWING REF. 10

REVISIONS

NO.	DATE	BY	REMARKS
1	12-1-24	J.H.	Approval
2	1-2-25	J.H.	
3			
4			
5			
6			
7			
8			
9			
10			

EXPANSION DEVICES
 M. SP73-92
 MCCRACKEN COUNTY, KENTUCKY
 JOHN H. JENNINGS COMPANY, CO.
 COUNTY, KENTUCKY, HUGO, KY.
 ORDERED SAME
 ORDERED BY J.H.
 ORDERED BY 10364
 ORDERED BY 3692
 ORDERED BY 6